

**Rail Corridor  
Tax Increment District #5 Creation  
Redevelopment Area #1 Amendment  
Project Plan  
City of Stoughton, WI**

**Prepared For:**

City of Stoughton  
Redevelopment Authority  
381 East Main Street  
Stoughton, WI 53589  
(608) 873-6677

**Prepared By:**

**vierbicher**  
planners | engineers | advisors



999 Fourier Drive, Suite 201  
Madison, WI 53717  
(608) 826-0532

***Draft: 12-17-09***

# Acknowledgements

## **City Council**

Jim Griffin – Mayor  
Larry Weiss  
Sonny Swangstu  
Paul Lawrence  
Ron Christianson  
Dave McKichan  
Carl Chenoweth  
Greg Jenson  
Ross Scovotti  
Rollie Odland  
Tim Carter

## **Plan Commission**

Jim Griffin, Chair  
David McKichan, Vice-Chair  
Ron Christianson  
Todd Krcma  
Eric Hohol  
Sonny Swangstu  
Keith Comstock

## **Redevelopment Authority**

Ron Christianson  
Dan Kittleson, Chair  
Paul Lawrence  
Jim Schaefer  
Steve Sletten  
Peter Sveum  
Scott Truel

## **City Staff**

Laurie Sullivan, Finance Director  
Luann Alme, City Clerk  
Rodney Scheel, Planning Director  
Diane Reinstad, RDA Secretary

## **Joint Review Board**

Laurie Sullivan - City of Stoughton  
David Worzala - Dane County  
Mary Gavigan - Stoughton Area School District  
Roger Price - Madison Area Technical College  
David Phillips - At-Large Member

## **Vierbicher Associates, Inc.**

Gary Becker, Project Manager  
© 2009 Vierbicher Associates

# Table of Contents

Introduction .....	1
Proposed Public Works.....	5
Detailed Project Costs.....	8
Economic Feasibility .....	9
Financing Methods & Timetable .....	11
Overlying Taxing Jurisdictions.....	13
"12% Test" .....	14
Changes to Maps, Plans, Ordinances.....	15
Relocation.....	16
Promoting Orderly Development .....	17
District Boundaries.....	18

## Appendix A: Parcel List and Maps

### Parcel List

- Map #1: District Boundary and Parcel Numbers
- Map #2: Condition of Property
- Map #3: Existing Land Uses
- Map #4: Proposed Land Uses
- Map #5: Proposed Improvements
- Map #6: Current Zoning
- Map #7: Future Zoning
- Map #8: Amended Redevelopment Area Boundary
- Neighborhood Plan Map

## Appendix B: Financial Attachments

- Attachment #1: Planned Project Costs
- Attachment #2: Financing Summary
- Attachment #3: Debt Service Plan
- Attachment #4: Tax Increment Pro Forma
- Attachment #5: Tax Increment Cash Flow
- Attachment #6: Analysis of Impact to Overlying Taxing Jurisdictions
- Attachment #7: Increment Projections
- Redevelopment Sub-area Boundary Map

## Appendix C: Resolutions, Notices, Minutes, and Other Attachments

- Attachment # 1: Timetable
- Attachment # 2: Opinion Letter from City Attorney Regarding Compliance With Statutes
- Attachment # 3: Notice to Overlying Taxing Jurisdictions of Creation of Joint Review Board (JRB)
- Attachment #4: Designation of Boundary of TID No. 6
- Attachment #5: Blight Notification Letter
- Attachment #6: City Council Resolution Declaring Blighted Area
- Attachment #7: JRB Meeting Notice – First Meeting on TID #5
- Attachment #8: JRB Meeting Minutes – First Meeting on TID #5
- Attachment #9: Public Hearing Notice to Overlying Taxing Jurisdictions
- Attachment #10: Public Hearing Notice Proof of Publication
- Attachment #11: Public Hearing Notice to Property Owners
- Attachment #12: Minutes of Public Hearing on TIF Project Plan and Community Development Authority (RDA) Approval of TIF Project Plan
- Attachment #13: RDA Certification of Redevelopment District & Cover Page of Recorded Plan

Attachment #14: City Council Resolution Creating TID #5 and Approving Project Plan  
Attachment #15: JRB Final Meeting Notice on TID #5  
Attachment #16: JRB Resolution Approving TID #5  
Attachment #17: JRB Final Meeting Minutes on TID #5

# 1 Introduction

This project plan has been compiled to create Tax Increment District #5 (TID #5) and amend the boundary of Redevelopment Area #1 (RA #1) in the City of Stoughton. It has been prepared in compliance with Wisconsin Statutes Chapter 66.1105(4)(f) and 66.1331(10). The plan establishes a need for the district, the proposed improvements within the district, an estimated time schedule, and an estimated budget. The plan also includes a detailed description of the Tax Increment District (TID) and boundaries. The boundary of RA #1 has been amended to follow the newly created boundary of TID #5. RA #1 is a redevelopment project area for exercising the power of the Redevelopment Authority (RDA) as defined in 66.1331(3)(h). The original Redevelopment Area Project Plan, adopted by the City Council on March 25, 2008, will still serve as the redevelopment plan required to be prepared by an RDA in 66.1331(3)(Lm).

## Approval Process

The Stoughton City Council met on July 28, 2009 and directed the RDA to prepare a draft project plan and boundary to create TID #5 and amend RA #1. The City Council also authorized the formation of a Joint Review Board (JRB) at that time. The City of Stoughton RDA is authorized to prepare the plans necessary to carry out a plan of redevelopment within TID #5. The City Council passed a resolution declaring the original Redevelopment Area blighted on March 11, 2008. The original boundary area was found to be 56.08% blighted. No blighted parcels are being brought in with the amended RA #1 boundary; the percentage of blighted properties after the boundary amendment is 52.25%.

At their December 10, 2009 meeting, the RDA scheduled a public hearing for January 27, 2010. A draft project plan was reviewed by the Redevelopment Authority on December 23, 2009. As a result of the discussion, revisions to the plan were made. Notice of the Public Hearing was sent to the overlying taxing jurisdictions on December 28, 2009. Owners of property within the boundaries of TID #5 and RA #1 were notified by mail on December 28, 2009 of the proposed designation of blight and of the Public Hearing. An informational presentation to the Plan Commission was held on January 11, 2010. The Plan Commission found that the Project Plan complies with the City's Comprehensive Plan at that meeting.

The Joint Review Board (JRB) held its first meeting to discuss TID #5 on December 7, 2009. Laurie Sullivan was voted chair of the JRB, and Dave Phillips was voted at-large representative. A Public Hearing was held on the TID #5 boundary, project plan and RA #1 amendment on January 27, 2010. Notice of the public hearing was published on January 7, 2010 and January 14, 2010. The RDA approved the TID #5 boundary and project plan and the RA#1 boundary amendment following the public hearing and recommended it to the City Council for adoption.

The RA#1 amendment and the project plan for TID #5 was adopted by resolution of the City Council on February 23, 2010. The Joint Review Board met on \_\_\_\_\_, 2010 to approve the City Council Resolution creating TID #5. Documentation of all resolutions, notices and minutes can be found as attachments to this project plan.

As required by Wisconsin Statutes Chapter 66.1105(5)(b), a copy of the project plan will be submitted to the Wisconsin Department of Revenue and used as the basis for the certification of Tax Increment District #5 in the City of Stoughton.

This is to be used as the official plan that guides redevelopment activities within the TID #5 boundary. The Redevelopment Plan adopted by the City Council on March 25, 2008 remains the official redevelopment plan for RA #1, with the exception of the boundary amendment contained within this Plan. Also, the March 24, 2009 Rail Corridor Neighborhood Plan should be consulted prior to redevelopment within the area.

Implementation of this plan and completion of the proposed activities will require a case by case authorization by the RDA and City Council. Public expenditures for projects listed in the plan will be based on the development status of the land and economic conditions existing at the time the project is scheduled for construction. The City Council or RDA is not mandated to make expenditures described in this plan and is limited to implementing only those project cost categories identified. Changes in boundaries or additional project categories not identified here will require formal amendment to the plan involving public review and City Council approval.

As stated in the City Council resolution approving this plan (see attachments), this project plan conforms to the Comprehensive Plan of the City of Stoughton.

## **Plan of Redevelopment for TID #5**

### ***Inventory of Area***

The area that is the subject of this plan is in the City of Stoughton, located in Dane County, WI. TID #5 (and the amended RA #1) is comprised of properties west and south of Downtown Stoughton. The area is generally referred to as the "Rail Corridor."

Underutilized, deteriorated, and undervalued parcels and improvements characterize the area. Some of the area consists of industrial/manufacturing buildings, most of which are underutilized, and some of which have gone unutilized for many years. The actual or suspected environmental contamination will limit the redevelopment prospects of much of the area in TID #5 without City involvement in the redevelopment process.

Other areas of the TID contain some of Stoughton's oldest housing stock, much of which needs improvement.

Overall, TID #5's accessible location along Main Street (USH 51) and adjacent to Downtown Stoughton makes it an attractive area to redevelop for the City and for potential developers. The City and RDA intend to use the tools and powers authorized by State Statutes to promote the redevelopment of this area and prevent further deterioration of infrastructure and site improvements. The creation of a Tax Increment Finance District with an overlapping Redevelopment Area will promote further redevelopment and investment from property owners, both within and outside of the district. The creation of the TID allows the City to provide needed infrastructure, as well as funding to local stakeholders through incentives and grants, to encourage business and property owners to proactively participate in revitalization.

The City Council passed a resolution declaring the area blighted on March 11, 2008. 34.5 acres, or 52.3% of real property in the TID #5 boundary is blighted. Table 1 shows an inventory of property within TID #5/RA #1. Map #2 in Appendix A shows the parcels found to be blighted.

**Table 1: Inventory of Property within TID #5/RA #1**

	Parcels	Acres	Percentage
Blighted Property	35	34.5	52.3% (of real property)
Vacant Property	20	10.8	16.4% (of real property)
Real Property	137	66.0	71.2% (of total area)
Right of Way	--	26.7	28.8% (of total area)
Total Boundary Area	--	92.7	100% (of total area)

*\* The statutory definition of vacant land is when the land value is greater than the improvement value.*

The entire area is served by City water and sewer service. Electric power is provided by Stoughton Utilities. Public utilities are adequate to serve the District. Other than a limited taxi service for \_\_\_\_\_ run by \_\_\_\_\_, Stoughton does not have public transportation.

### ***Redevelopment Plans***

The City of Stoughton has completed a Neighborhood Plan for the Rail Corridor area. The Plan was adopted on March 24, 2009. The "Preferred Development Plan" (PDP) created as part of that planning process is included in Appendix A of this document. The land uses proposed in the PDP have been carried over into the Future Land Use Map (Map #4 in Appendix A) for this TID #5 project plan. The sections below discuss the redevelopment vision for the Rail Corridor area that was contained in the Neighborhood Plan, with references to the PDP map. Note that the PDP and the descriptions below are conceptual, and does not preclude quality development that may not precisely fit the descriptions from occurring.

#### ***Light Industrial***

The PDP shows light industrial to the east of the rail line between Main Street and East South Street. This area is currently occupied by Stoughton Trailers, which owns an approximately 73,000 square foot manufacturing and storage facility along the rail line. The substantial grade difference between the parcel lessens its impact on the adjacent residential to the east, which is on much higher ground. If it is redeveloped or changes hands, this parcel should continue to be used for light industrial activities that have a low impact (as far as noise, odors, etc.) on surrounding residential development.

#### ***Commercial Space & Commercial/Industrial Flex Space***

There are five new buildings proposed north of Main Street — two are shown as commercial/industrial flex space, one is shown as commercial space, and two are shown as potential live/work buildings (which are discussed in the following section)

The objective in including commercial space and flex space is to maintain employment opportunities within walking distance of existing and new residential development. Historically, the Rail Corridor area has been a source of employment for the City, which should continue. However, the area should transition away from the heavy industrial that developed along the river in the early- and mid-20th century to uses that can take better advantage of the proximity of the Downtown and use the river as an amenity.

The space designated as commercial/industrial flex space could accommodate small existing businesses and start-up businesses, and could also be a good location for a business incubator.

In either case, it should not be home to heavy industries that would generate excessive odors or noise.

The commercial space at the corner of Main Street and Hillside Avenue is envisioned as commercial office and service space. With the high visibility of Main Street, especially coming in to Downtown Stoughton from the Interstate, this corner is ideal for tenants who need a prominent location. Banks, law offices, medical offices, and business offices in general are a good fit for this location. Ancillary services such as a dry cleaner or copy shop may be appropriate for ground-floor space, but retail and restaurant uses should stay concentrated west of the railroad tracks.

#### *Live/Work & Mixed-Use Development*

The two buildings along Main Street west of the railroad tracks are designated as live/work units — a mixed-use designation that would have street front retail and services, with owners or employees living above. The location has excellent potential for a business incubator — artists and other craftspeople could live above galleries, storefronts, and workspaces, and sell their products to the public. Such a project would extend Main Street to the east, and build off of the success that the Stoughton Center for the Performing Arts has had across the street. ArtSpace performed a study for the Stoughton Chamber of Commerce that indicated strong interest in a Stoughton location for artists' space. There are three other areas shown on the PDP as "mixed-use development."

#### *Residential*

The biggest component of the PDP is residential development south of East South Street. The PDP shows 166 residential units in a mix of townhomes, condominiums, and apartments. The layout is conceptual, and should not preclude alternate layouts that may end up working better after thorough site investigations are done. Also, construction of residential units will depend upon the housing market at the time, and the RDA, Plan Commission, and City may wish to consider well-designed proposals that do not match the exact unit mix or unit locations that are shown on the PDP. What should stay consistent is a mixture of owner-occupied townhomes and condominiums interspersed with apartments — the neighborhood should be accessible to owners and renters of different incomes.

The PDP shows an area designated as Multi-Family residential east of the railroad tracks along East South Street. This area does not show a specific layout or unit count, but should be considered for redevelopment as the land becomes available.



## 2 Proposed Public Works

TID #5 is being created in order to promote the redevelopment of blighted property, stimulate revitalization, improve a portion of the City, enhance the value of property, decrease crime, and broaden the property tax base. The City and Redevelopment Authority will spend funds on planning, public improvements, demolition of existing structures, financial incentives, and site improvements to promote redevelopment activities.

Any cost directly or indirectly related to achieving the objectives of blight elimination or redevelopment is considered a "project cost" and eligible to be paid from tax increments of this tax increment district, including but not limited to the list below. The costs of planning, engineering, design, surveying, legal and other consultant fees, testing, environmental studies, permits necessary for the public work, easements, judgments or claims for damages, and other expenses for all projects are included as project costs.

Listed below are major public improvement categories, which are necessary and standard improvements for eliminating blight and promoting redevelopment of blighted areas:

### **A. Capital Costs**

Including, but not limited to, the actual costs of the construction of public works or improvements, new buildings, structures, and fixtures; the demolition, alteration, remodeling, repair or reconstruction of existing buildings, structures and fixtures other than the demolition of listed historic properties and the acquisition of equipment to service the district.

### **B. Infrastructure**

That portion of costs related to the construction or alteration of sewerage treatment plants, water treatment plants or other environmental protection devices, storm or sanitary sewer lines, stormwater management facilities, water lines, or amenities on streets or the rebuilding or expansion of streets the construction, alteration, rebuilding or expansion of which is necessitated by the project plan for a district and is within the district. Infrastructure can also be installed outside of the district, if required to carry out project plans, but only the portion which directly benefits the district is an eligible cost.

### **C. Site Development Costs**

1. Site development activities required to make sites suitable for development including, but not limited to, environmental studies and remediation, stripping topsoil, grading, compacted granular fill, topsoil replacement, access drives, parking areas, landscaping, storm water detention areas, demolition of existing structures, relocating utility lines and other infrastructure, utilities, signs, fencing, and related activities.
2. Site development activities to serve the property such as installation of sanitary sewer, water, storm sewer, natural gas, electric, telecommunications and other utility connections.

### **D. Land Acquisition & Assembly**

This may include but is not limited to fee title, easements, appraisals, environmental evaluations, consultant and broker fees, closing costs, surveying and mapping, lease and/or the sale of property at below market price to encourage or make feasible an economic development project. This could also include the cost to relocate existing businesses or residents to allow redevelopment.

**E. Development Incentives**

The City may use TID #5 funds to provide incentives to developers and businesses to promote and stimulate new development. The City may enter into agreements with property owners, businesses, developers or non-profit organizations for the purpose of sharing costs to encourage the desired kinds of improvements. In such cases, the City will execute development agreements with the developers and/or businesses, which will identify the type and amount of assistance to be provided.

The City may provide funds either directly or through an organization authorized by Wisconsin Statutes (such as a Redevelopment Authority, Public Housing Authority, development organizations or other appropriate organizations) for the purpose of making capital available to business and or developers to stimulate or enable economic and housing development projects within TID #5. Funds may be provided in the form of a cash grant, forgivable loan, direct loan or loan guarantee. Such funds may be provided at terms appropriate to, and as demonstrated to be required by the proposed economic development and or housing project and shall be set forth in a development agreement.

**F. Professional Services**

Including, but not limited to, those costs incurred for architectural, planning, engineering, and legal advice related to implementing the project plan, negotiating with property owners and developers, and planning for the redevelopment of the area.

**G. Discretionary Payments**

Payments made, at the discretion of the local legislative body, which are found to be necessary or convenient to the creation of tax incremental districts or the implementation of project plans. This could include expenditures to fund RDA programs to eliminate blight, improve housing stock, remove social obstacles to development, provide labor force training, day care services, or neighborhood improvements to improve the quality of life or safety of the residents, workers, or visitors and other payments which are necessary or convenient to the implementation of this project plan.

**H. Administration Costs**

Administrative costs including, but not limited to, a reasonable portion of the salaries of the City Administrator, Building Inspector, Attorney, Finance Director, Auditor, Assessor, Public Works employees, City Engineer, RDA staff, consultants and others directly involved with planning and administering the projects and overall District on behalf of the City or RDA.

**I. TIF Organizational Costs**

Organization costs including, but not limited to, the fees of the financial consultant, attorney, engineers, planners, community development consultants, surveyors, map makers, environmental consultants, appraisers and other contracted services related to the planning and creation of the TID. This shall include the preparation of feasibility studies, project plans, engineering to determine project costs and prepare plans, maps, legal services, environmental investigations, grant applications, regulatory approvals and other payments made which are necessary or convenient to the creation of this tax incremental district. Also included as an eligible administrative cost is the \$1,000 Certification Fee charged by the Wisconsin Department of Revenue Certification fee.

**J. Inflation**

Anticipated inflation between the time of creation of the TID and the planned time of expenditures. The actual amount will vary depending upon the timing of expenditures and the inflation rate.

**K. Financing Costs**

Including, but not limited to, all interest paid to holders of evidences of indebtedness issued to pay for project costs and any premium paid over the principal amount of the obligations because of the redemption of the obligations prior to maturity.

The projects listed above will provide necessary facilities and support to enable and encourage the development of TID #5. These projects may be implemented in varying degrees in response to development needs. Project costs may be expended up to one-half mile outside the TID #5 boundaries provided that the expenditures benefit the TID. The financial attachments in Appendix B list specific amounts associated with the cost categories above. Map #5 in Appendix A shows public works that are planned as part of this TID.

### 3 Detailed Project Costs

Table #2 describes the detailed project costs for project categories anticipated to be implemented during the expenditure period of TID #5. This format follows Department of Revenue guidance on detailed project costs, which states "this list should show estimated expenditures expected for each major category of public improvements."

All costs listed are based on 2009 prices and are preliminary estimates. The City reserves the right to revise these cost estimates to reflect change in project scope, inflation and other unforeseen circumstances between 2009 and the time of construction or implementation. The City should pursue grant programs to help share project costs included in this project plan, as appropriate. Planned project costs are listed in the table below. A more detailed list of planned project costs is included as part of the Financial Attachments.

The City may fund specific project cost items shown below in significantly greater or lesser amounts in response to opportunities that will help the City accomplish the purposes of TID #5. The City will generally use overall benefit to the City and economic feasibility (i.e. the availability of future revenue to support additional project costs) in determining the actual budget for project cost items over the course of the TID's expenditure period.

**Table #2: City of Stoughton TID #5 Planned Project Costs**

<b>Proposed Improvements</b>	<b>Total Cost</b>	<b>Others' Share</b>	<b>TID Share</b>
A. Capital Costs	\$0	\$0	\$0
B. Infrastructure	\$1,000,000	\$0	\$1,000,000
C. Site Development Costs	\$500,000	\$0	\$500,000
D. Land Acquisition & Assembly	\$2,000,000	\$0	\$2,000,000
E. Development Incentives	\$2,000,000	\$0	\$2,000,000
F. Professional Services	\$300,000	\$60,000	\$240,000
G. Discretionary Payments	\$500,000	\$0	\$500,000
H. Administration Costs	\$154,050	\$0	\$154,050
I. TIF Organizational Costs	\$26,000	\$0	\$26,000
Inflation	\$1,342,162	\$0	\$1,342,162
<b>Subtotal</b>	<b>\$7,822,212</b>	<b>\$60,000</b>	<b>\$7,762,212</b>
K. Financing Costs ( <i>less Capitalized Interest</i> )			\$3,489,765
Capitalized Interest			\$386,587
<b>Total TID Expenditure</b>			<b>\$11,638,564</b>

There are no project costs planned for TID #5 which would directly benefit property outside the TID, therefore there are no "non-project" costs.

## 4 Economic Feasibility

In order to evaluate the economic feasibility of the TID, it is necessary to project the amount of tax incremental revenue that can reasonably be generated from the district. The ability of the municipality to finance proposed projects must also be determined. TID #5 is economically feasible if the tax incremental revenue projected to be generated over the life of the TID is sufficient to pay all project and financing costs incurred during the TID's expenditure period. The components of such an analysis include:

- A. The expected increase in property valuation due to inflation and the impact of general economic conditions on the TID.
- B. The expected increase in property valuation due to new development encouraged by the TID.
- C. Any change that may take place in the full value tax rate.
- D. The expected TID revenues.
- E. The expected TID cash flow (the *timing* of the revenue).

Following is a discussion of these components. Financing issues are discussed in the next section.

### A. Inflation

Throughout the past twenty years, the annual rate of inflation in the construction industry has averaged 2.5 percent (source: Engineering News-Record Construction Cost Index History - <http://enr.construction.com/cost/costcci.asp>). Appreciation of land values in the proposed TID area have been nominal due in part to the number of blighted in the area. The inflation rate, for the purpose of making projections of equalized value, will be 1.5 percent. Inflation for purposes of projecting future project costs is assumed to be 3.0 percent.

### B. Increase in Property Value

The proposed plan for TID #5 includes the redevelopment of parcels within the TID (Table #3). The formation of TID #5 will enable the City to provide developer incentives that will stimulate redevelopment in the area. This redevelopment will create increased property valuation. The value of anticipated redevelopment is shown in Attachment #7 in Appendix B. Redevelopment values were estimated using redevelopment scenarios developed in the Rail Corridor Neighborhood Plan.

### C. Full Value Tax Rate

The third variable to consider in projecting TID revenues is the full value tax rate (Table #3). The full value tax rate is adjusted annually based on property valuation and the amount of funds required by all taxing jurisdictions to support their adopted annual budgets. The following chart summarizes the historic full value tax rate in the City between 2000 and 2009.

The full value rate has dropped between 2000 and 2009, though the rates for 2008 and 2009 are slightly higher than 2007. For our purposes, the 2009 tax rate of \$18.56 per \$1,000 with a -0.75% change will be used in this project plan to project TID revenues. This mill rate takes into account property tax levies from the School District, City,

**Table #3: Full Value Tax Rate**

Year	Mill Rate/ \$1,000	Percent Change
2000	0.02275	--
2001	0.02225	-2.20%
2002	0.02160	-2.92%
2003	0.02154	-0.28%
2004	0.02031	-5.71%
2005	0.02027	-0.20%
2006	0.01882	-7.15%
2007	0.01826	-2.98%
2008	0.01843	0.93%
2009	0.01856	0.71%

County, and Technical College. The -0.75% change will provide a conservative estimate since an increase in the full value tax rate would result in an increase in tax increment for the District.

**D. TIF Revenues**

A projected construction increment of approximately \$42 million (not including inflation) is expected over the life of TID #5. The projected TIF Revenue from TID #5 will be as shown in the Tax Increment Proforma in Attachment #4 of Appendix B. The total tax increment revenue is sufficient to pay all TID related costs for the projects and amounts shown in the Planned Project Costs in Attachment #1 of Appendix B.

**E. Cash Flow**

Another consideration regarding the adequacy of TID revenues toward paying TID project costs is the relative timing of revenue and expenditures, or cash flow. There are sufficient TID revenues over the life of the TID to pay all costs. In addition, there are sufficient TID revenues in each year to pay all costs. The City may borrow additional funds to pay interest expense on borrowings (capitalized interest) to bridge temporary cash flow gaps caused by the two year lag in collecting tax revenue on new increment. The Tax Increment Cash Flow Worksheet shown on Attachment #5 summarizes the assumed cash flow.

## 5 Financing Methods & Timetable

### A. Financing Methods

An important aspect to consider in assessing the economic feasibility of TID #5 is the ability of the City to finance desired projects to encourage development. Financial resources available to the City include general obligation notes and bonds, revenue bonds, special assessments, and federal and state community development programs.

General obligations of the City are limited by state law to five percent of the equalized property value. As of December 31, 2008 the City had total debt capacity of approximately \$49.1 million and \$\_\_\_\_\_ in existing General Obligation debt. Using this data, the current remaining debt capacity is \$\_\_\_\_\_. There is approximately \$7.6 million in anticipated project costs within the TID. Not all anticipated project costs will need to be borrowed. For example, TID administration costs can be paid out of City operating funds and reimbursed from the TID when funds are available. Other expenses can be paid out of TID cash flow as projects are constructed, assessed, and begin paying property taxes.

The City has the capacity to finance some project costs through direct debt or bond instruments, utilizing the general revenue capacity of the City to secure those instruments. There are other mechanisms available to pay for some project costs that would not count against the City's constitutional debt capacity. "Developer-Financed TIF" is one of these options, where the developer borrows funds that the City would have borrowed under a traditional TIF and is then reimbursed by the City. Another option is for the RDA to issue bonds instead of the City. Both such methods are likely to be used to some extent within TID #5.

The City may also utilize revenue bonds repaid from fees for services charged by the City. Common examples of such revenue are charges for sewer and water usage. There is no statutory limit on the amount of revenue bonds that can be issued; however, the City must demonstrate the ability to repay the debt from anticipated revenues. A further factor that could potentially limit revenues is that utility rates may be regulated by the Wisconsin Public Service Commission.

Some project costs can potentially be paid through special assessments levied on properties directly benefiting from the improvements. Costs of streets, curbs, gutters, and sewer and water extensions are commonly paid through special assessments. The City can issue special assessment bonds, pledging revenues from the special assessments on individual properties to repay the debt. Property owners are generally permitted to pay the special assessments in installments. These bonds are not counted against the City's constitutional debt limit.

### B. Timetable

The maximum life of the TID is twenty-seven years; a three-year extension may be requested. The City of Stoughton has a maximum of twenty-two years, until 2037 to incur TIF expenses for the projects outlined in this plan. The City Council and RDA are not mandated to make the improvements defined in this plan; each project will require case-by-case review and approval. The decision to proceed with a particular project will be based on the economic conditions and budgetary constraints at the time a project is scheduled for consideration. Actual implementation of the projects may be accelerated or deferred, depending on conditions existing at the time.

Timing for each of the planned redevelopment projects is shown in the TID Pro Forma (Attachment #4 in Appendix B) and TID Cash Flow (Attachment #5 in Appendix B) worksheets.

**C. Financing Methods and Costs to be Incurred**

Financing for the projects shown above will be done as shown in the Financing Summary and the Debt Service plans for the borrowing shown in Attachments #2 and #3 in Appendix B. The actual number, timing, and amounts of debt issues will be determined by the City at its convenience and as dictated by the nature of the projects as they are implemented. All monetary obligations will be incurred within the twenty-two year expenditure period, unless relocation requires extending beyond the given period.



## **6 Overlying Taxing Jurisdictions**

Taxing Districts overlying TID #5 in the City of Stoughton include Dane County, the Stoughton Area School District, Madison Area Technical College, and the State of Wisconsin. Impact on the overlying taxing districts is based on the percentage of tax collections in the TID #5 boundary in 2009. Total TIF Increment over the life of the district is taken by the proportionate share from each taxing jurisdiction. An analysis of the impact on overlying taxing districts is included as Attachment #6 in Appendix B.

Many of the projects planned for the TID would not occur, or would occur at significantly lower values, but for the availability of tax incremental financing. TID #5 is a mechanism to make improvements in an area of Stoughton that is experiencing environmental contamination and other blighting influences, and to support growth in the City's tax base. All taxing jurisdictions will benefit from the increased property values, improved public safety, and enhanced community vitality which will result from the projects planned in TID #5.

# 7

## "12% Test"

§66.1105(4)(gm)4.c states that the equalized value of taxable property of the new TID plus the value increments of all existing districts cannot exceed 12 percent of the total equalized value of the taxable property within the municipality. The charts below use values contained in the Wisconsin Department of Revenue's 2009 TIF Value Limitation Report.

**Table 4: TID Capacity**

Equalized Value	%	Maximum TID Capacity*
\$982,161,800	x 12%	\$117,859,416

\* New TIDs cannot be created or properties added to existing TIDs if this level is exceeded.

**Table 5: Existing & Proposed TID Equalized Values**

Active & Proposed TIDs	Increment
TID #3	\$12,071,800
TID #4	\$6,352,300
Subtotal	\$18,424,100
TID #5, proposed	\$18,296,934*
Grand Total	\$36,721,034

\*Estimate.

The equalized value of existing City of Stoughton TIDs is \$18,424,100. \$18,296,934 of equalized value is proposed to be added in TID #5. This adds up to \$36,721,034 or 3.74%. Therefore, the City is in compliance with the statutory equalized value test for TID creation.

## **8** Changes to Maps, Plans, Ordinances

No changes are proposed in the Master Plan, Official Map, or Building Codes as part of this Plan. The City's Zoning Ordinance and other City Ordinances are required to implement this project plan. Individual redevelopment proposals may require changes in zoning designation consistent with the intent of this Plan. Zoning is shown on Map #6 in Appendix A. There are multiple zoning districts used within the TID boundary. Redevelopment proposals will have to go through the appropriate procedure to receive the proper zoning for their project.

## 9 Relocation

Although relocation is currently not anticipated, it is possible that it will be necessary to implement projects proposed during the life of TID #5. If relocation were to become necessary in the future, the following is the method proposed by the City or Community Development Authority for displacement or relocation. Before negotiations begin for the acquisition of property or easements, all property owners will be contacted to determine if there will be displaced persons as defined by Wisconsin Statutes and Administrative Rules. If it appears there will be displaced persons, all property owners and prospective displaced persons will be provided an informational pamphlet prepared by the Wisconsin Department of Commerce (DOC). If any person is to be displaced as a result of the acquisition they will be given a pamphlet on "Relocation Benefits" as prepared by the DOC. The City will file a relocation plan with the DOC and shall keep records as required in Wisconsin Statutes 32.27. The City will provide each owner a full narrative appraisal, a map showing the owners of all property affected by the proposed project and a list of neighboring landowners to whom offers are being made as required by law.

## **10 Promoting Orderly Development**

The creation of TID #5 will encourage the revitalization and redevelopment of blighted and otherwise economically distressed and underutilized property in a highly visible location in the City. It will help to promote redevelopment in the City, rather than have development occur on undeveloped sites elsewhere. Creation of the TID will also promote development of the tax base of the City and, in general, promote the public health, safety and general welfare. Successful implementation of the projects planned in TID #5 will build tax base for the City and overlying taxing jurisdictions.

## 11 District Boundaries

Prior to considering the specific area to include within the TID, the Community Development Authority established criteria to act as guidelines in their work. The boundary criteria are as follows:

1. The equalized value of taxable property of the district plus the value increment of all existing districts does not exceed 12 percent of the total equalized value of taxable property within the City.
2. A minimum of 50 percent of the TID must be a blighted area, in need of rehabilitation or conservation or suitable and zoned for industrial use.
3. All lands within the TID are contiguous.
4. Not more than 25% of the real property within the District has stood vacant for an entire seven (7) year period prior to creation.

### **City of Stoughton TID #5 Boundary Description**

Insert Boundary Description

Excluding all wetlands. Bearings and distances are approximate, from record sources and are incorporated for description clarity purposes only.

# A Maps

## Appendix A: Maps

Parcel List

Map #1: District Boundary and Parcel Numbers

Map #2: Condition of Property

Map #3: Existing Land Uses

Map #4: Proposed Land Uses

Map #5: Proposed Improvements

Map #6: Current Zoning

Map #7: Future Zoning

Map #8: Amended Redevelopment Area Boundary

Neighborhood Plan Map

### City of Stoughton: Tax Increment District #5 & Redevelopment Area #1 Parcel List

PIN	Parcel Number	Owner	Parcel Address	Mailing Address		Land Value	Imp. Value	Acres	Vacant	Blighted
1	051108111650	Teresa L Seamonson	616 E South St	2109 Lincoln Ave	Stoughton WI 53589	\$15,700	\$108,100	0.09		
2	051108112239	Chris Hull	209 S Sixth St	952 State Highway 51	Stoughton WI 53589	\$24,400	\$66,700	0.13		Y
3	051108144008	Vs Of Madison Llp	409 E South St	2221 Mustang Way	Madison WI 53718	\$33,100	\$104,200	0.16		
4	051108162864	Gordon & Sherry L Johnson	616 Dunkirk Ave	616 Dunkirk Ave	Stoughton WI 53589	\$0	\$0	0.20		
5	051108113194	Roger & Joy A Haugen	524 E Jefferson St	1924 W Main St	Stoughton WI 53589	\$20,900	\$138,000	0.13		
6	051108199709	Gordon & Sherry L Johnson	616 Dunkirk Ave	616 Dunkirk Ave	Stoughton WI 53589	\$34,800	\$143,900	0.20		
7	051108129016	Joseph & Ruby Cabibbo	404 S Fifth St	404 S Fifth St	Stoughton WI 53589	\$48,100	\$256,100	0.40		
8	051108130791	Dack Print LLC	341 E Main St	109 E Taft St	Stoughton WI 53589	\$17,700	\$0	0.06	Y	
9	051108112122	Kris K Hull	201 S Sixth St	952 Us Highway 51	Stoughton WI 53589	\$39,400	\$77,700	0.23		Y
10	051108112444	Chris Hull	209 S Sixth St	952 State Highway 51	Stoughton WI 53589	\$26,100	\$0	0.14	Y	Y
11	051108197952	Stoughton Public Schools		211 N Forest St	Stoughton WI 53589	\$0	\$0	3.08		Y
12	051108112015	Chris K Hull	501 E Main St	952 Us Highway 51	Stoughton WI 53589	\$27,700	\$107,200	0.18		Y
13	051108161883	Anthony N Roman	616 Eighth St	616 Eighth St	Stoughton WI 53589	\$42,400	\$107,700	0.39		
14	051105470509	Whistle Stop Development LLC		2025 Meadow Dr	Stoughton WI 53589	\$0	\$0	0.50		Y
15	051108139185	Richard & Susan Smith	401 S Fifth St	2945 County Hwy A	Stoughton WI 53589	\$17,400	\$95,600	0.10		
16	051108110660	Diane C Sproul	516 E South St	516 E South St	Stoughton WI 53589	\$34,800	\$120,600	0.20		
17	051108139354	Myra Jean Kunert	415 S Fifth St	415 S Fifth St	Stoughton WI 53589	\$20,900	\$112,400	0.12		
18	051108180979	WI Dot		2101 Wright St	Madison WI 53704	\$0	\$0	ROW		
19	051105468003	Stoughton Packaging Corp	409 Ridge St	116 N Swift St	Edgerton WI 53534	\$3,500	\$0	0.20	Y	
20	051108110553	L B Property Management LLC	425 S Sixth St	479 Garfield Ave	Evansville WI 53536	\$24,300	\$332,700	0.12		
21	051108111123	Joshua Leclair & Mary Hilton	405 S Seventh St	718 School St	Verona WI 53593	\$31,400	\$202,000	0.21		
22	051108111230	Steve & Julie Dickson	409 S Seventh St	2575 Dickson Rd	Stoughton WI 53589	\$40,500	\$126,800	0.27		
23	051108111865	Emily Bahr	624 E South St	113 S Page St Apt A	Stoughton WI 53589	\$29,600	\$112,800	0.27		
24	051108129230	Thomas C Elverman	311 E Jefferson St	311 E Jefferson St	Stoughton WI 53589	\$8,700	\$111,000	0.05		
25	051108136900	David Melton	480 E Main St	1447 County Hwy B	Cambridge WI 53523	\$91,000	\$15,600	0.77	Y	Y
26	051108181012	Lois L Alme	524 E Main St	72 Franklin Rd	Stoughton WI 53589	\$29,400	\$202,500	0.19		
27	051108181601	Clarence A Haase	529 E Main St	529 E Main St	Stoughton WI 53589	\$9,800	\$25,200	0.12		Y
28	051105468905	Stoughton Packaging Corp	430 Ridge St	116 N Swift St	Edgerton WI 53534	\$17,400	\$0	0.20	Y	
29	051108129972	Michael & Kathryn Dougherty	316 E South St	316 E South St	Stoughton WI 53589	\$34,800	\$103,200	0.20		
30	051108138480	Jerry & Maxine King	300 S Sixth St	1030 N Page St	Stoughton WI 53589	\$16,300	\$47,500	0.06		Y
31	051108139247	Dennis & Mary Huvila	409 S Fifth St	409 S Fifth St	Stoughton WI 53589	\$17,400	\$193,200	0.10		
32	051105494501	Stoughton Packaging Corp		116 N Swift St	Edgerton WI 53534	\$4,100	\$0	0.26	Y	
33	051108111347	Steven & Julie Dickson	415 S Seventh St	2575 Dickson Rd	Stoughton WI 53589	\$22,700	\$95,400	0.13		
34	051108181101	Julia Mann Deyoung	516 E Main St	972 County Hwy N	Stoughton WI 53589	\$75,600	\$152,000	2.09		Y
35	051108111445	J. Brown & G. Walhelm-Brown	419 S Seventh St	419 S Seventh St	Stoughton WI 53589	\$15,700	\$117,000	0.09		
36	051108138793	Peterson'S Service Inc	435 E Main St	435 E Main St	Stoughton WI 53589	\$44,200	\$84,000	0.14		Y
37	051108162319	Juan & Lisa Olveda	508 Dunkirk Ave	1011 Sundt Ln	Stoughton WI 53589	\$15,700	\$91,600	0.10		
38	051108110124	Howard & Vicki Brantmeyer	517 E Jefferson St	3806 Union Dane Rd	Brooklyn WI 53521	\$34,800	\$90,300	0.20		
39	051108113096	Dana I Gorney	316 S Seventh St	316 S Seventh St	Stoughton WI 53589	\$24,400	\$115,000	0.14		
40	051108139461	Judith A Huberd	425 S Fifth St	425 S Fifth St	Stoughton WI 53589	\$19,000	\$75,000	0.10		Y
41	051108144624	Stoughton, City Of	515 S Fourth St	381 E Main St	Stoughton WI 53589	\$0	\$0	1.80		
42	051108165138	DDW Enterprises & Donald Wahlin	524 Eighth St	Po Box 606	Stoughton WI 53589	\$27,000	\$1,000	1.18	Y	Y



PIN	Parcel Number	Owner	Parcel Address	Mailing Address		Land Value	Imp. Value	Acres	Vacant	Blighted
43	051108199503	Charles & Andrea Ree	638 Dunkirk Ave	638 Dunkirk Ave	Stoughton WI 53589	\$50,600	\$72,000	0.42		
44	051108199601	Donald D Wahlin	623 Eighth St	Po Box 606	Stoughton WI 53589	\$61,600	\$21,700	2.55	Y	Y
45	051105472534	David & Shannon Mckichan	578 E Main St	1324 Vernon	Stoughton WI 53589	\$46,700	\$141,400	0.46		Y
46	051108139130	Ehren & Amy Schulz	409 E Jefferson St	409 E Jefferson St	Stoughton WI 53589	\$34,800	\$111,000	0.20		
47	051108139602	Steve & Julie Dickson		2575 Dickson Rd	Stoughton WI 53589	\$14,800	\$23,400	0.09		
48	051108143198	Holley Moulding Inc	433 E South St	Po Box 1298	Winston OR 97496	\$16,800	\$0	0.60	Y	Y
49	051108162097	Stoughton, City Of	624 Eighth St	381 E Main St	Stoughton WI 53589	\$0	\$0	0.01		
50	051108110348	Jeremy & Kristine Annen	405 S Sixth St	405 S Sixth St	Stoughton WI 53589	\$34,800	\$122,400	0.20		
51	051108144446	Stoughton, City Of	501 S Fourth St	381 E Main St	Stoughton WI 53589	\$0	\$0	0.40		
52	051108165227	Donald D Wahlin	501 E South St	Po Box 606	Stoughton WI 53589	\$53,100	\$21,800	2.23	Y	Y
53	051108112882	James W Allen	516 E Jefferson St	516 E Jefferson St	Stoughton WI 53589	\$22,700	\$174,500	0.14		
54	051108130086	M. Ellen Arnold & B. Wagner	424 S Fifth St	2160 Colladay Point Dr	Stoughton WI 53589	\$13,600	\$16,500	0.07		Y
55	051108137230	Danny K Aaberg	508 E Main St	508 E Main St	Stoughton WI 53589	\$31,200	\$164,900	0.20		Y
56	051108163747	Terry & Sheila Rigdon	500 Dunkirk Ave	500 Dunkirk Ave	Stoughton WI 53589	\$13,100	\$0	0.15	Y	
57	051108195703	Pearl G Kittleson	617 E South St	617 E South St	Stoughton WI 53589	\$26,100	\$130,500	0.17		
58	051108113416	Rtsm Properties LLC	300 S Seventh St	112 Harvest Cir	Oregon WI 53575	\$22,700	\$109,000	0.15		
59	051108143081	Larry Roberts Auto Electric Inc	425 E South St	1508 Moline	Stoughton WI 53589	\$43,900	\$127,900	0.26		
60	051108110455	John J Conway	421 S Sixth St	421 S Sixth St	Stoughton WI 53589	\$13,900	\$101,700	0.08		
61	051108129436	Aaron & Lisa Thomson	409 S Fourth St	270 County Hwy N	Edgerton WI 53534	\$34,800	\$103,300	0.20		
62	051108131012	James E Hammis	305 E Main St	1716 Us Highway 51	Stoughton WI 53589	\$16,500	\$85,000	0.06		
63	051108131558	Stoughton, City Of	381 E Main St	381 E Main St	Stoughton WI 53589	\$0	\$0	0.20		
64	051108138917	Stoughton, City Of		381 E Main St	Stoughton WI 53589	\$0	\$0	0.20		
65	051108161721	W Richard Gordon III	621 E South St	621 E South St	Stoughton WI 53589	\$17,400	\$97,500	0.10		
66	051108163845	Terry Rigdon & Sheila Rigdon	500 Dunkirk Ave	500 Dunkirk Ave	Stoughton WI 53589	\$24,400	\$154,700	0.15		
67	051108112775	Mark W Limpert	508 E Jefferson St	508 E Jefferson St	Stoughton WI 53589	\$34,800	\$162,200	0.20		
68	051108163514	Jeff & Lisa Nyenhuis	525 Eighth St	5171 Kittycrest Dr	Fitchburg WI 53711	\$58,000	\$215,800	0.31		
69	051108130184	Raney E Reeves III	418 S Fifth St	418 S Fifth St	Stoughton WI 53589	\$22,700	\$111,000	0.13		
70	051108163621	Larry & Brent Hawkins	517 Eighth St	479 Garfield Ave	Evansville WI 53536	\$29,600	\$92,200	0.18		
71	051108181709	Clarence A Haase	529 E Main St	529 E Main St	Stoughton WI 53589	\$4,900	\$40,100	0.06		Y
72	051108110017	Gregory T Kerkenbush	525 E Jefferson St	5304 Bremer Rd	Mcfarland WI 53558	\$34,800	\$119,200	0.20		
73	051108110777	Ruby M Crews	526 E South St	526 E South St	Stoughton WI 53589	\$43,400	\$131,300	0.30		
74	051108131110	Kevin Pomeroy	309 S Fourth St	4129 Iroquois Dr	Madison WI 53711	\$10,500	\$85,300	0.07		
75	051108167136	Holley Moulding Inc	433 E South St	Po Box 1298	Winston OR 97496	\$42,400	\$253,600	1.88		Y
76	051108180997	Stoughton, City Of		381 E Main St	Stoughton WI 53589	\$0	\$0	ROW		
77	051108183207	Donald D Wahlin	515 E Main St	Po Box 606	Stoughton WI 53589	\$74,000	\$302,300	4.83		Y
78	051108111767	Donald Wahlin & DDW Enterprises	416 S Academy St	Po Box 606	Stoughton WI 53589	\$600	\$0	0.02	Y	
79	051108113309	Arthur & Tamala Ramirez	308 S Seventh St	308 S Seventh St	Stoughton WI 53589	\$31,400	\$118,600	0.20		
80	051108130675	Dack Print LLC	341 E Main St	109 E Taft St	Stoughton WI 53589	\$35,400	\$166,900	0.12		
81	051108135830	David Melton	119 S Fifth St	1447 County Hwy B	Cambridge WI 53523	\$7,600	\$12,600	0.12		
82	051108180906	Whistle Stop Development LLC	556 E Main St	2025 Meadow Dr	Stoughton WI 53589	\$119,400	\$395,400	1.85		Y
83	051108181902	Stoughton Trailers Inc		Po Box 606	Stoughton WI 53589	\$3,300	\$94,300	0.19		Y
84	051108110231	Brian & Deborah Saeger	509 E Jefferson St	509 E Jefferson St	Stoughton WI 53589	\$34,800	\$96,800	0.20		
85	051108143116	Larry Roberts Auto Electric Inc	425 E South St	1508 Moline St	Stoughton WI 53589	\$400	\$0	0.03	Y	

PIN	Parcel Number	Owner	Parcel Address	Mailing Address		Land Value	Imp. Value	Acres	Vacant	Blighted
86	051108161016	Stoughton Trailers Inc	524 Eighth St	Po Box 606	Stoughton WI 53589	\$45,800	\$458,500	2.02		Y
87	051108195801	Jennifer Harris	609 E South St	609 E South St	Stoughton WI 53589	\$19,200	\$128,800	0.12		
88	051105468209	Stoughton Packaging Corp	418 Ridge St	116 N Swift St	Edgerton WI 53534	\$7,100	\$0	0.73	Y	
89	051108129338	James D Anderson	307 E Jefferson St	307 E Jefferson St	Stoughton WI 53589	\$10,500	\$102,500	0.06		
90	051105467906	Stoughton Packaging Corp	418 Ridge St	116 N Swift St	Edgerton WI 53534	\$800	\$0	0.33	Y	
91	051105470009	Stoughton Packaging Corp	409 Ridge St	116 N Swift St	Edgerton WI 53534	\$75,700	\$107,300	2.99		
92	051108110884	Larry & Amy Franklin	418 S Seventh St	418 S Seventh St	Stoughton WI 53589	\$17,400	\$108,700	0.10		
93	051108111543	Nicole E Ehr	425 S Seventh St	425 S Seventh St	Stoughton WI 53589	\$13,900	\$104,200	0.09		
94	051105497704	Whistle Stop Development LLC		2025 Meadow Dr	Stoughton WI 53589	\$0	\$0	0.22		
95	051108103942	Stoughton Trailers Inc	416 S Academy St	Po Box 606	Stoughton WI 53589	\$90,700	\$981,100	5.35		Y
96	051108129543	Ronald & Debra Christianson	401 S Fourth St	401 S Fourth St	Stoughton WI 53589	\$15,700	\$152,200	0.09		
97	051108143894	Kevin & Kelly Russell	415 E South St	4251 Vilas Rd	Cottage Grove WI 53527	\$19,200	\$101,800	0.12		
98	051108165012	Timothy & Carol Thomas	509 S Seventh St	509 S Seventh St	Stoughton WI 53589	\$32,600	\$96,400	0.24		
99	051108165629	Holley Moulding Inc	433 E South St	Po Box 1298	Winston OR 97496	\$18,800	\$800	0.66	Y	Y
100	051108167672	Holley Moulding Inc	433 E South St	Po Box 1298	Winston OR 97496	\$25,200	\$256,900	0.89		Y
101	051108139685	Cathy L Dickinson	418 S Sixth St	743 Hemphill Ave	Edgerton WI 53534	\$34,800	\$112,100	0.20		
102	051108144339	Valerie S Blum	317 E South St	317 E South St	Stoughton WI 53589	\$34,800	\$121,400	0.20		
103	051108129758	Steve & Juliana Dickson	425 S Fourth St	2575 Dickson Rd	Stoughton WI 53589	\$19,600	\$79,100	0.10		Y
104	051108129865	Richard & Gail Stirr	308 E South St	7510 Red Fox Trl	Madison WI 53717	\$34,800	\$129,300	0.20		
105	051108130568	Kendall & Patricia Gulseth	355 E Main St	355 E Main St	Stoughton WI 53589	\$17,700	\$153,100	0.06		
106	051108131236	Stoughton, City Of	321 S Fourth St	381 E Main St	Stoughton WI 53589	\$0	\$0	0.40		
107	051108138533	Danny Naberg	210 S Sixth St	417 E Jefferson St	Stoughton WI 53589	\$5,200	\$56,900	0.04		Y
108	051108144115	Daniel & Angela Petre	401 E South St	14629 Bailey St	Taylor MI 48180	\$34,800	\$104,400	0.20		
109	051108112668	Christopher J Prough	500 E Jefferson St	500 E Jefferson St	Stoughton WI 53589	\$34,800	\$118,700	0.20		
110	051108130317	Stoughton, City Of	381 E Main St	381 E Main St	Stoughton WI 53589	\$0	\$0	0.33		
111	051108131450	Stoughton, City Of	324 S Fifth St	381 E Main St	Stoughton WI 53534	\$0	\$0	0.20		
112	051108137132	B C Amundson & E A Amundson	500 E Main St	413 Nora St	Stoughton WI 53589	\$61,600	\$49,500	0.39	Y	Y
113	051108139416	Jeremy & Danica Cossman	421 S Fifth St	421 S Fifth St	Stoughton WI 53589	\$33,100	\$99,900	0.19		
114	051108143287	Holley Moulding Inc	433 E South St	Po Box 1298	Winston OR 97496	\$56,600	\$436,300	1.99		Y
115	051108162533	Jimmy & Rose Yost	532 Dunkirk Ave	532 Dunkirk Ave	Stoughton WI 53589	\$34,800	\$104,700	0.20		
116	051108129650	Steve & Juliana Dickson	417 S Fourth St	2575 Dickson Rd	Stoughton WI 53589	\$17,400	\$111,400	0.10		
117	051108162435	Timothy G Frank	516 Dunkirk Ave	516 Dunkirk Ave	Stoughton WI 53589	\$33,100	\$130,700	0.29		
118	051108166646	Holley Moulding Inc	433 E South St	Po Box 1298	Winston OR 97496	\$15,200	\$0	0.26	Y	Y
119	051108162640	Richard & Nancee L Bjordahl	540 Dunkirk Ave	540 Dunkirk Ave	Stoughton WI 53589	\$34,800	\$117,000	0.20		
120	051108111016	David A Goeden	401 S Seventh St	1020 Gilrust St	Stoughton WI 53589	\$33,100	\$139,000	0.25		
121	051108112551	Susan M Mapes	309 S Sixth St	309 S Sixth St	Stoughton WI 53589	\$42,000	\$116,600	0.27		
122	051108139023	Danny K Aaberg	417 E Jefferson St	417 E Jefferson St	Stoughton WI 53589	\$34,800	\$232,700	0.20		
123	051108144222	William S Duter	325 E South St	325 E South St	Stoughton WI 53589	\$34,800	\$54,800	0.20		
124	051108163292	Sigmund & Carolyn Olson	609 Eighth St	609 Eighth St	Stoughton WI 53589	\$34,800	\$117,300	0.20		
125	051108163407	Jason Rogers & Sarah Chevis	601 Eighth St	601 Eighth St	Stoughton WI 53589	\$34,800	\$104,700	0.20		
126	051108182502	WI Dot		2101 Wright St	Madison WI 53704	\$0	\$0	ROW		
127	051108195409	Jerry & Marguerite Clark	809 E South St	809 E South St	Stoughton WI 53589	\$6,400	\$116,700	0.38		Y
128	051108112337	Michael G Zweep	208 S Seventh St	208 S Seventh St	Stoughton WI 53587	\$24,400	\$130,400	0.16		

PIN	Parcel Number	Owner	Parcel Address	Mailing Address		Land Value	Imp. Value	Acres	Vacant	Blighted
129	051108138631	Richard & Giovanna Lazzaro	419 E Main St	519 S Page St	Stoughton WI 53589	\$10,800	\$163,800	0.04		
130	051108162757	Dennis Johnson & Betsy Kittleson	600 Dunkirk Ave	600 Dunkirk Ave	Stoughton WI 53589	\$52,000	\$139,300	0.52		
131	051108165316	Chad & Wendy Vike	517 S Seventh St	517 S Seventh St	Stoughton WI 53589	\$19,200	\$81,900	0.12		
132	051108130906	Dack Print LLC	341 E Main St	109 E Taft St	Stoughton WI 53589	\$17,700	\$0	0.06	Y	
133	051108136802	P. Mayo & A. Zanchetti-Mayo	217 S Fifth St	217 S Fifth St	Stoughton WI 53589	\$300	\$0	0.02	Y	
134	051108138695	Phillip & Vicky Elsing	421 E Main St	124 W Chicago St	Stoughton WI 53589	\$27,300	\$83,600	0.12		Y
135	051108139622	Sarah J Phifer	424 S Sixth St	424 S Sixth St	Stoughton WI 53589	\$20,000	\$98,200	0.12		
136	051105467602	Stoughton Packaging Corp	418 Ridge St	116 N Swift St	Edgerton WI 53534	\$40,100	\$70,300	5.99		
137		City of Stoughton	401 E Main St	401 E Main St	Stoughton WI 53589	\$0	\$0	1.91		

\$3,550,400	\$14,081,800	65.98
Total	Total	Total

	Acres	Percent
Total Boundary Area	92.7	100.0%
Parcel Area	66.0	71.2%
ROW Area	26.7	28.8%
Blighted Area	34.47	52.2%
Vacant Area	10.83	16.41%

Total Equalized Value	\$18,296,934
-----------------------	--------------

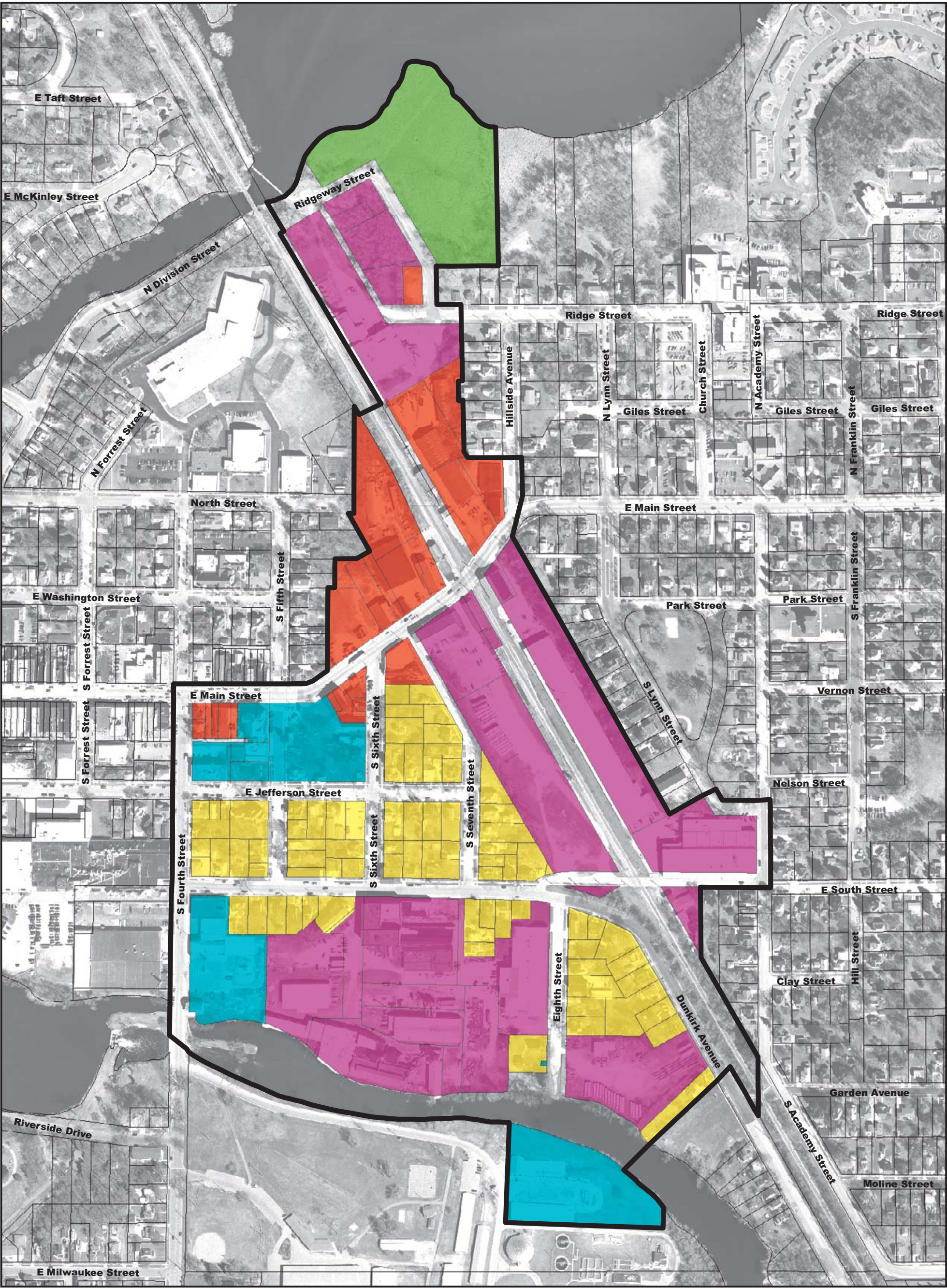










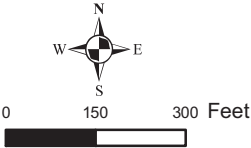


**Legend**

- Residential
- Industrial / Warehouse
- Commercial
- Government / Institutional
- Open / Vacant
- Street or Railroad Right-of-Way
- TID #5 Boundary

Map 3: Existing Land Use  
TID #5, City of Stoughton, WI

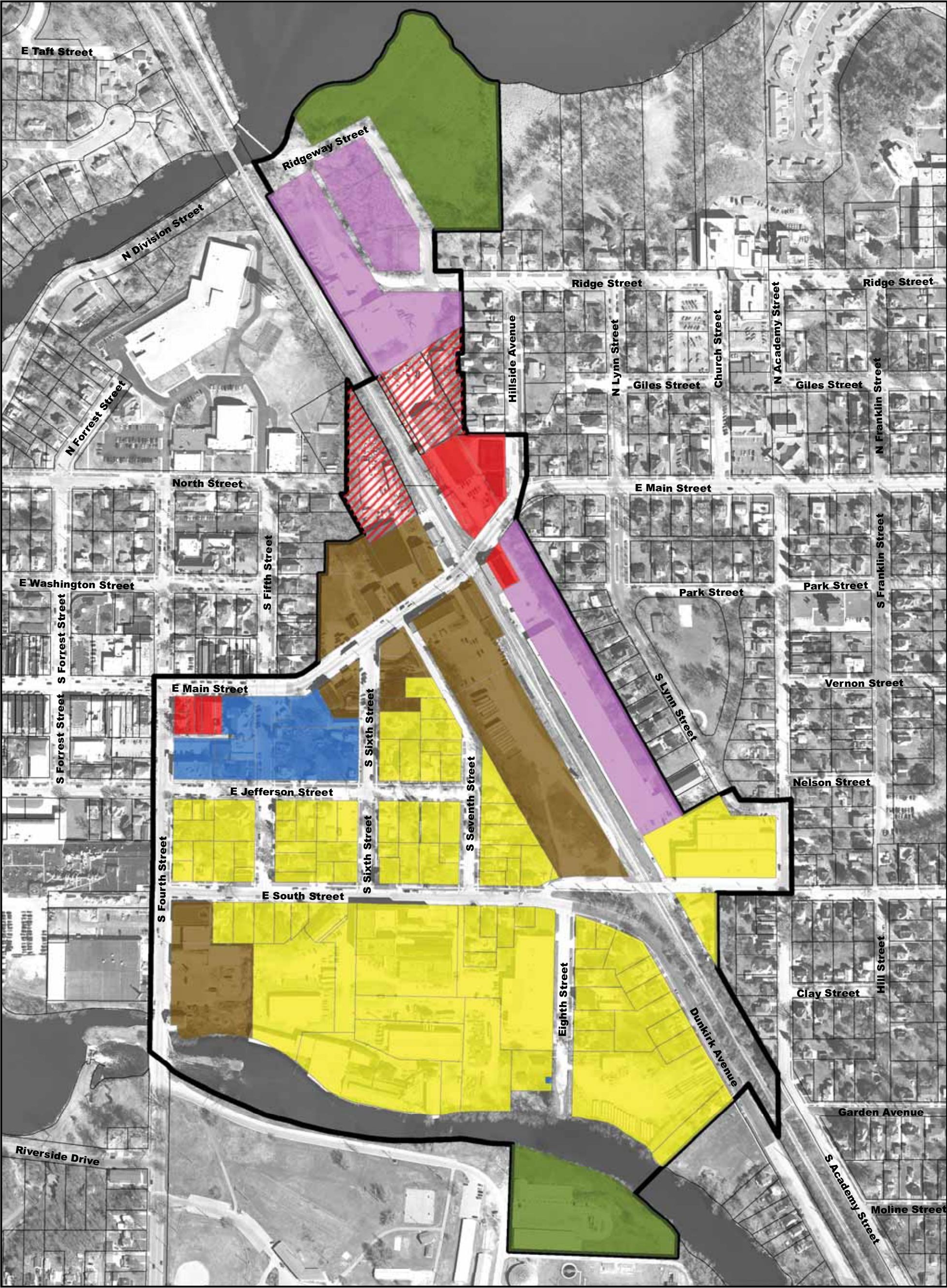
September 3, 2009



**vierbicher**  
planners | engineers | advisors







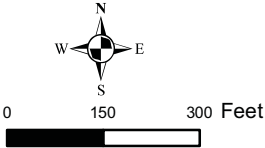
Map 4: Proposed Land Use  
TID #5, City of Stoughton, WI

December 18, 2009

Legend

- |  |                             |  |                            |  |                       |
|--|-----------------------------|--|----------------------------|--|-----------------------|
|  | TID #5 Boundary             |  | Government / Institutional |  | Parkland / Open Space |
|  | Commercial                  |  | Industrial / Warehouse     |  | Residential           |
|  | Commercial / Industrial Mix |  | Mixed Use                  |  |                       |

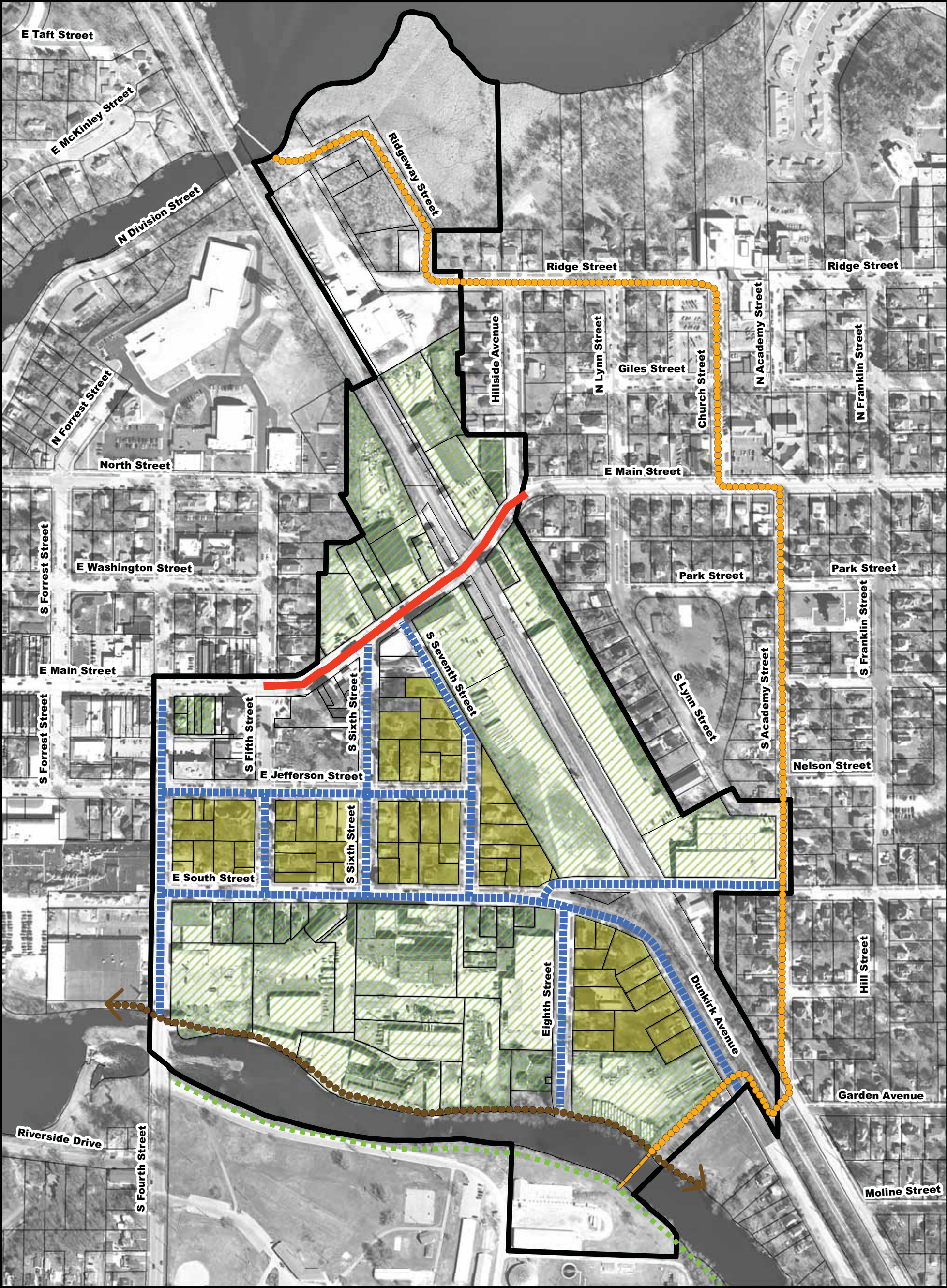
Data Sources: Dane County Land Information Office  
Vierbicher



**vierbicher**  
planners | engineers | advisors







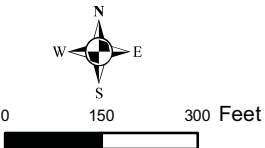
Map 5: Proposed Improvements  
TID #5, City of Stoughton, WI

December 18, 2009

Legend

- Riverwalk Bike Trail
- Bicycle Route Improvements
- Bicycle / Pedestrian Bridge
- ▬▬ General Street & Utilities Improvements
- ▬▬ Landscaping Improvements
- Main St. Streetscape & Utilities Improvements

- Residential Housing Rehabilitation Program
- ▨ Redevelopment Assistance

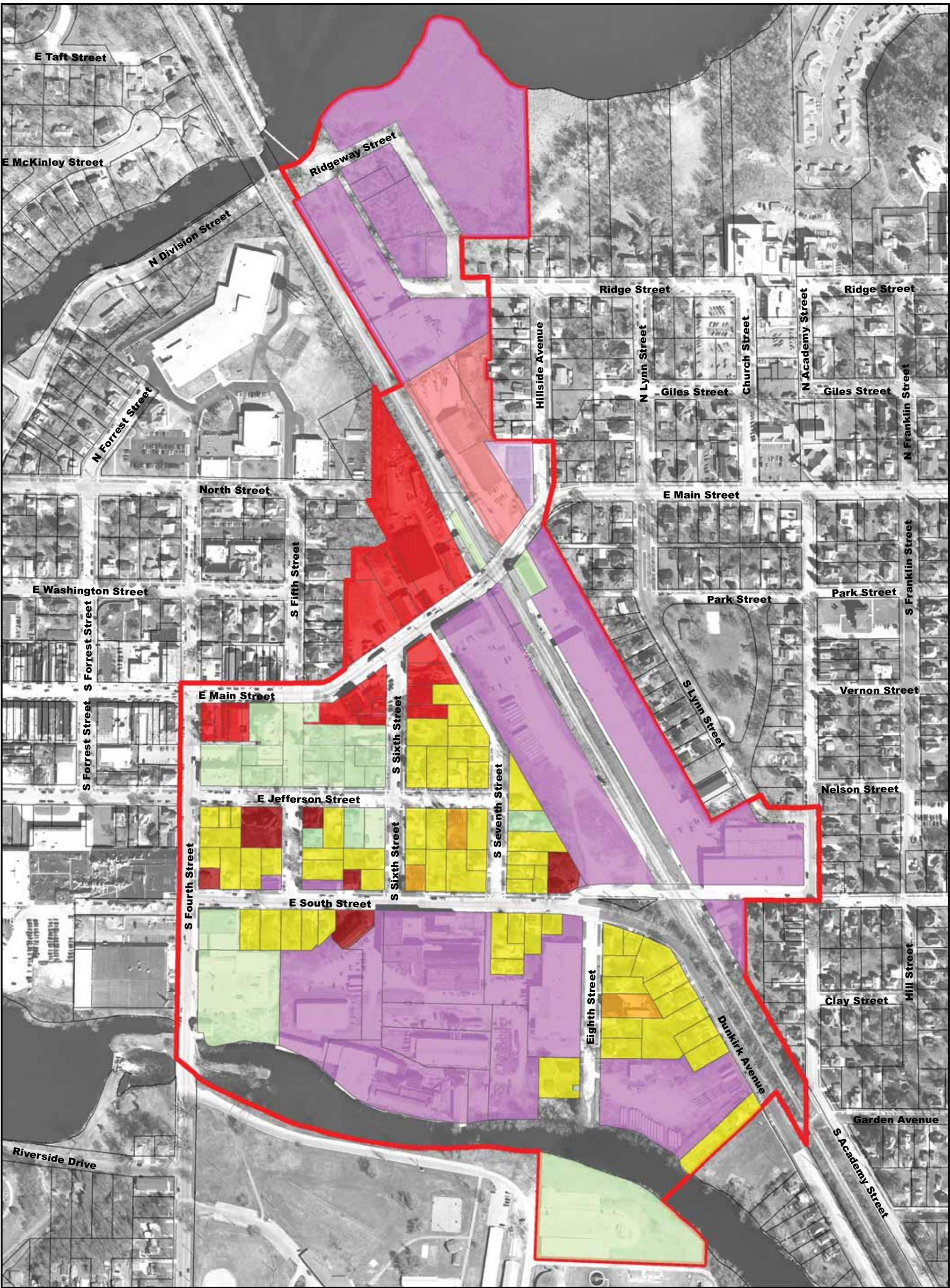


vierbicher  
planners | engineers | advisors



Data Sources: Dane County Land Information Office  
Vierbicher



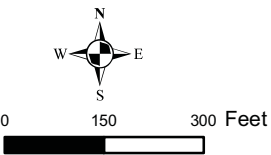


Map 6: Current Zoning  
TID #5, City of Stoughton, WI

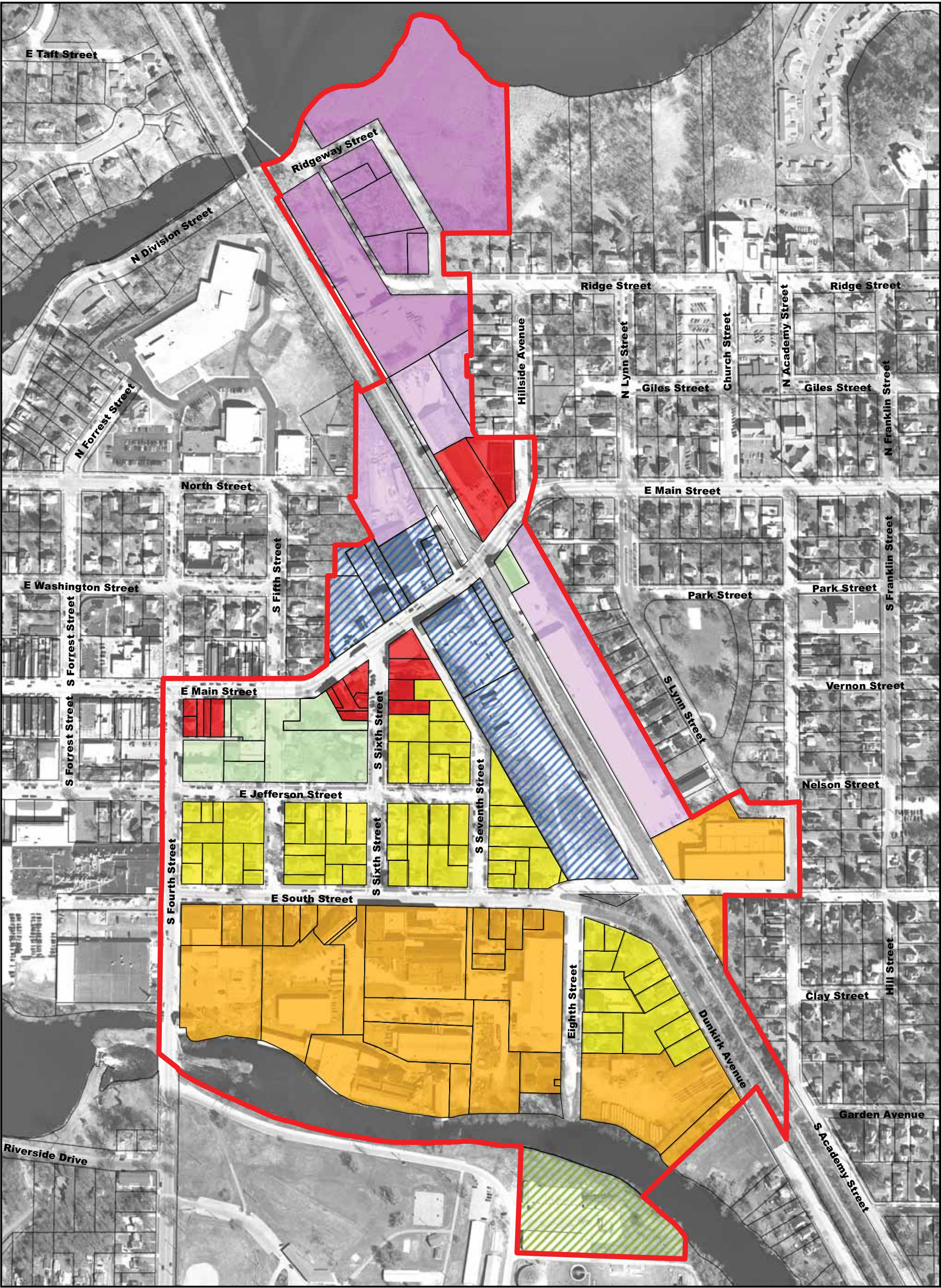
December 18, 2009

Legend

- |                      |                                 |                                 |                              |
|----------------------|---------------------------------|---------------------------------|------------------------------|
| TID #5 Boundary      | I: Institutional                | PB: Planned Business            | TR-6: Two-Family Residential |
| CB: Central Business | MR-10: Multi-Family Residential | PI: Planned Industrial          |                              |
| HI: Heavy Industrial | NB: Neighborhood Business       | SR-6: Single-Family Residential |                              |







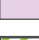



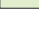




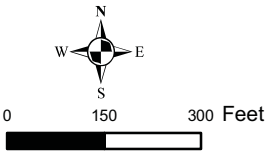
Map 7: Future Zoning  
TID #5, City of Stoughton, WI

December 18, 2009

Legend

- |   |                         |   |  |
|---|-------------------------|---|--|
|  | TID #5 Boundary         |  | CB: Central Business   |
|  | HI: Heavy Industrial    |  | SR6: Single-Family Residential   |
|  | Planned Industrial      |  | MR-24: Multi-Family Residential or Residential-Oriented PD - Planned Development |
|  | I: Institutional - Park |  | PD: Planned Development (Mixed-Use)  |
|  | I: Institutional        |   |  |

Data Sources: Dane County Land Information Office  
City of Stoughton  
Vierbicher



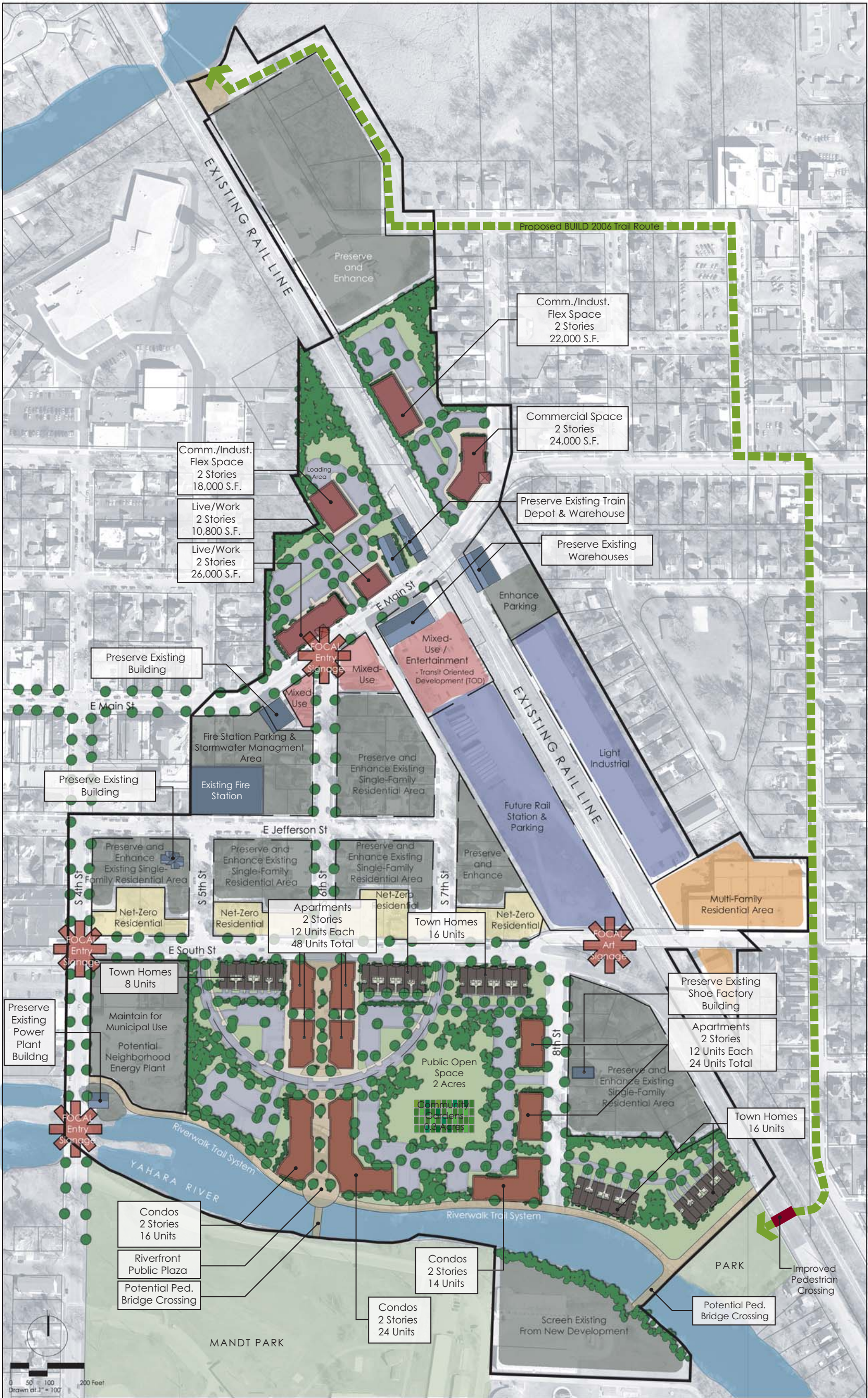
vierbicher  
planners | engineers | advisors











STOUGHTON BUILD 2008 • REDEVELOPMENT AREA NO. 1  
city of stoughton, wisconsin • vierbicher associates



## **B** Financial Attachments

### **Appendix B: Financial Attachments**

Attachment #1: Planned Project Costs  
Attachment #2: Financing Summary  
Attachment #3: Debt Service Plan  
Attachment #4: Tax Increment Pro Forma  
Attachment #5: Tax Increment Cash Flow  
Attachment #6: Analysis of Impact to Overlying Taxing Jurisdictions  
Attachment #7: Increment Projections  
Redevelopment Sub-area Boundary Map

**Attachment #1 - Planned Project Costs**  
**City of Stoughton**  
**TID No. 5 (Rail Corridor)**  
**12/17/2009**

Type of Expenditure	Amount	% Paid By		Costs Allocated to Project
		Project	Other	
<b>A. Capital Costs</b>				
	<b>\$0</b>	<b>100%</b>	<b>0%</b>	<b>\$0</b>
<b>B. Infrastructure</b>				
Roads, Streetscaping, Utilities	\$1,000,000	100%	0%	\$1,000,000
<b>Total Infrastructure</b>	<b>\$1,000,000</b>	<b>100%</b>	<b>0%</b>	<b>\$1,000,000</b>
<b>C. Site Development Costs</b>				
Site Cleanup & Demolition Costs	\$500,000	100%	0%	\$500,000
	<b>\$500,000</b>	<b>100%</b>	<b>0%</b>	<b>\$500,000</b>
<b>D. Land Acquisition &amp; Assembly</b>				
	<b>\$2,000,000</b>	<b>100%</b>	<b>0%</b>	<b>\$2,000,000</b>
<b>E. Development Incentives</b>				
Housing Improvement Program	\$500,000	100%	0%	\$500,000
Business Development Incentives	\$1,500,000	100%	0%	\$1,500,000
	<b>\$2,000,000</b>	<b>100%</b>	<b>0%</b>	<b>\$2,000,000</b>
<b>F. Professional Services*</b>				
	<b>\$300,000</b>	<b>80%</b>	<b>20%</b>	<b>\$240,000</b>
<b>G. Discretionary Payments</b>				
RDA Funds	\$400,000	100%	0%	\$400,000
Grant Matching Funds	\$100,000	100%	0%	\$100,000
	<b>\$500,000</b>	<b>100%</b>	<b>0%</b>	<b>\$500,000</b>
<b>H. Administration Costs</b>				
City Staff	\$100,000	100%	0%	\$100,000
Payments to DOR	\$4,050	100%	0%	\$4,050
Audits	\$50,000	100%	0%	\$50,000
<b>Total Administration Costs</b>	<b>\$154,050</b>	<b>100%</b>	<b>0%</b>	<b>\$154,050</b>
<b>I. Organizational Costs</b>				
Department of Revenue Submittal Fee	\$1,000	100%	0%	\$1,000
Professional Fees	\$20,000	100%	0%	\$20,000
City Staff & Publishing	\$5,000	100%	0%	\$5,000
<b>Total Organization Costs</b>	<b>\$26,000</b>	<b>100%</b>	<b>0%</b>	<b>\$26,000</b>
<b>Inflation</b>	<b>\$1,342,162</b>	<b>100%</b>	<b>0%</b>	<b>\$1,342,162</b>
<b>Total Project Costs</b>	<b>\$7,822,212</b>	<b>99%</b>	<b>1%</b>	<b>\$7,762,212</b>
<b>J. Financing Costs</b>				
Interest, Fin. Fees, Less Cap. Interest				\$3,489,765
Plus Capitalized Interest				\$386,587
<b>Total Financing Costs</b>				<b>\$3,876,352</b>
<b>TOTAL TID EXPENDITURE</b>				<b>\$11,638,564</b>

\* Assume portion paid by grants

**Attachment #2 - Financing Summary**  
**City of Stoughton**  
**TID No. 5 (Rail Corridor)**  
**12/17/2009**

<b>TID Activities</b>	<b>Loan #1 4/1/2010</b>	<b>Loan #2 4/1/2014</b>	<b>Loan #3 4/1/2020</b>	<b>Total</b>
A. Capital Costs	\$0	\$0	\$0	\$0
B. Infrastructure	\$0	\$250,000	\$750,000	\$1,000,000
C. Site Development Costs	\$300,000	\$200,000	\$0	\$500,000
D. Land Acquisition & Assembly	\$200,000	\$700,000	\$1,100,000	\$2,000,000
E. Development Incentives	\$0	\$750,000	\$1,250,000	\$2,000,000
F. Professional Services	\$80,000	\$80,000	\$80,000	\$240,000
G. Discretionary Payments	\$0	\$0	\$0	\$0
H. Administration Costs	\$0	\$0	\$0	\$0
I. Organizational Costs	\$0	\$0	\$0	\$0
<b>Subtotal</b>	<b>\$580,000</b>	<b>\$1,980,000</b>	<b>\$3,180,000</b>	<b>\$5,740,000</b>
Inflation Factor Cost Adj. @ 3% per year	\$0	\$248,507	\$1,093,654	\$1,342,162
Grants	\$0	\$0	\$0	\$0
Reduction for Land Sale Revenue	\$0	\$0	\$0	\$0
<b>Total Cost For Borrowing</b>	<b>\$580,000</b>	<b>\$2,228,507</b>	<b>\$4,273,654</b>	<b>\$7,082,162</b>
Capitalized Interest	\$80,930	\$104,759	\$200,898	\$386,587
Financing Fees (2%)	\$13,488	\$47,618	\$91,317	\$152,423
Debt Reserve	\$0	\$0	\$0	\$0
Subtotal	\$674,419	\$2,380,884	\$4,565,870	\$7,621,172
Less Interest Earned	\$0	\$0	\$0	\$0
<b>BORROWING REQUIRED</b>	<b>\$674,419</b>	<b>\$2,380,884</b>	<b>\$4,565,870</b>	<b>\$7,621,172</b>

**Attachment #3a - Debt Service Plan  
City of Stoughton  
TID No. 5 (Rail Corridor)  
Tax Exempt Bond Issue**

Principal:		\$674,419	Project Cost:			\$580,000
Interest Rate:		4.00%	Finance Fees:			\$13,488
Term (Years):		20	Interest Earned:			\$0
# of Principal Payments:		16	Capitalized Interest:			\$80,930
Date of Issue:		4/1/2010	Total TID Cost of Loan:			\$953,034
Year	Principal Payment #	Unpaid Principal	Principal Payment	Interest Payment	Total Payment	Apply Surplus to Principal
2010	0	\$674,419	\$0	\$0	\$0	\$0
2011	0	\$674,419	\$0	\$26,977	\$26,977	\$0
2012	0	\$674,419	\$0	\$26,977	\$26,977	\$0
2013	0	\$674,419	\$0	\$26,977	\$26,977	\$0
2014	0	\$674,419	\$0	\$26,977	\$26,977	\$0
2015	1	\$674,419	\$30,902	\$26,977	\$57,879	\$0
2016	2	\$643,517	\$32,138	\$25,741	\$57,879	\$0
2017	3	\$611,379	\$33,423	\$24,455	\$57,879	\$0
2018	4	\$577,955	\$34,760	\$23,118	\$57,879	\$0
2019	5	\$543,195	\$36,151	\$21,728	\$57,879	\$0
2020	6	\$507,044	\$37,597	\$20,282	\$57,879	\$0
2021	7	\$469,447	\$39,101	\$18,778	\$57,879	\$0
2022	8	\$430,347	\$40,665	\$17,214	\$57,879	\$0
2023	9	\$389,682	\$42,291	\$15,587	\$57,879	\$0
2024	10	\$347,391	\$43,983	\$13,896	\$57,879	\$0
2025	11	\$303,408	\$45,742	\$12,136	\$57,879	\$0
2026	12	\$257,665	\$47,572	\$10,307	\$57,879	\$0
2027	13	\$210,093	\$49,475	\$8,404	\$57,879	\$0
2028	14	\$160,618	\$51,454	\$6,425	\$57,879	\$0
2029	15	\$109,165	\$53,512	\$4,367	\$57,879	\$0
2030	16	\$55,653	\$55,653	\$2,226	\$57,879	\$0
2031	17	\$0	\$0	\$0	\$0	\$0
2032	18	\$0	\$0	\$0	\$0	\$0
2033	19	\$0	\$0	\$0	\$0	\$0
2034	20	\$0	\$0	\$0	\$0	\$0
2035	21	\$0	\$0	\$0	\$0	\$0
2036	22	\$0	\$0	\$0	\$0	\$0
2037	23	\$0	\$0	\$0	\$0	\$0
Total			\$674,419	\$359,546	\$1,033,965	\$0



**Attachment #3b - Debt Service Plan  
City of Stoughton  
TID No. 5 (Rail Corridor)  
Bond Issue\***

Principal:		\$2,380,884	Project Cost:			\$2,228,507
Interest Rate*:		4.40%	Finance Fees:			\$47,618
Term (Years):		20	Interest Earned:			\$0
# of Principal Payments:		18	Capitalized Interest:			\$104,759
Date of Issue:		4/1/2014	Total TID Cost of Loan:			\$3,601,068
Year	Principal Payment #	Unpaid Principal	Principal Payment	Interest Payment	Total Payment	Apply Surplus to Principal
2010	0	\$0	\$0	\$0	\$0	\$0
2011	0	\$0	\$0	\$0	\$0	\$0
2012	0	\$0	\$0	\$0	\$0	\$0
2013	0	\$0	\$0	\$0	\$0	\$0
2014	0	\$2,380,884	\$0	\$0	\$0	\$0
2015	0	\$2,380,884	\$0	\$104,759	\$104,759	\$0
2016	0	\$2,380,884	\$0	\$104,759	\$104,759	\$0
2017	1	\$2,380,884	\$89,480	\$104,759	\$194,239	\$0
2018	2	\$2,291,404	\$93,418	\$100,822	\$194,239	\$0
2019	3	\$2,197,986	\$97,528	\$96,711	\$194,239	\$0
2020	4	\$2,100,458	\$101,819	\$92,420	\$194,239	\$0
2021	5	\$1,998,639	\$106,299	\$87,940	\$194,239	\$0
2022	6	\$1,892,339	\$110,976	\$83,263	\$194,239	\$0
2023	7	\$1,781,363	\$115,859	\$78,380	\$194,239	\$0
2024	8	\$1,665,504	\$120,957	\$73,282	\$194,239	\$0
2025	9	\$1,544,546	\$126,279	\$67,960	\$194,239	\$0
2026	10	\$1,418,267	\$131,836	\$62,404	\$194,239	\$0
2027	11	\$1,286,431	\$137,636	\$56,603	\$194,239	\$0
2028	12	\$1,148,795	\$143,692	\$50,547	\$194,239	\$0
2029	13	\$1,005,103	\$150,015	\$44,225	\$194,239	\$0
2030	14	\$855,088	\$156,616	\$37,624	\$194,239	\$0
2031	15	\$698,472	\$163,507	\$30,733	\$194,239	\$0
2032	16	\$534,966	\$170,701	\$23,538	\$194,239	\$0
2033	17	\$364,265	\$178,212	\$16,028	\$194,239	\$0
2034	18	\$186,053	\$186,053	\$8,186	\$194,239	\$0
2035	19	\$0	\$0	\$0	\$0	\$0
2036	20	\$0	\$0	\$0	\$0	\$0
2037	21	\$0	\$0	\$0	\$0	\$0
Total			\$2,380,884	\$1,324,943	\$3,705,827	\$0

\* Interest rate represents a blend of taxable and tax-exempt bond issuances.

**Attachment #3c - Debt Service Plan  
City of Stoughton  
TID No. 5 (Rail Corridor)  
Bond Issue\***

Principal:		\$4,565,870	Project Cost:		\$4,273,654	
Interest Rate*:		4.40%	Finance Fees:		\$91,317	
Term (Years):		17	Interest Earned:		\$0	
# of Principal Payments:		16	Capitalized Interest:		\$200,898	
Date of Issue:		4/1/2020	Total TID Cost of Loan:		\$3,631,436	
Year	Principal Payment #	Unpaid Principal	Principal Payment	Interest Payment	Total Payment	Apply Surplus to Principal
2010	0	\$0	\$0	\$0	\$0	\$0
2011	0	\$0	\$0	\$0	\$0	\$0
2012	0	\$0	\$0	\$0	\$0	\$0
2013	0	\$0	\$0	\$0	\$0	\$0
2014	0	\$0	\$0	\$0	\$0	\$0
2015	0	\$0	\$0	\$0	\$0	\$0
2016	0	\$0	\$0	\$0	\$0	\$0
2017	0	\$0	\$0	\$0	\$0	\$0
2018	0	\$0	\$0	\$0	\$0	\$0
2019	0	\$0	\$0	\$0	\$0	\$0
2020	0	\$4,565,870	\$0	\$0	\$0	\$0
2021	0	\$4,565,870	\$0	\$200,898	\$200,898	\$0
2022	1	\$4,565,870	\$202,595	\$200,898	\$403,493	\$0
2023	2	\$4,363,275	\$211,509	\$191,984	\$403,493	\$0
2024	3	\$4,151,766	\$220,815	\$182,678	\$403,493	\$0
2025	4	\$3,930,951	\$230,531	\$172,962	\$403,493	\$0
2026	5	\$3,700,420	\$240,674	\$162,818	\$403,493	\$0
2027	6	\$3,459,746	\$251,264	\$152,229	\$403,493	\$0
2028	7	\$3,208,482	\$262,320	\$141,173	\$403,493	\$0
2029	8	\$2,946,162	\$273,862	\$129,631	\$403,493	\$0
2030	9	\$2,672,300	\$285,912	\$117,581	\$403,493	\$0
2031	10	\$2,386,389	\$298,492	\$105,001	\$403,493	\$0
2032	11	\$2,087,897	\$311,625	\$91,867	\$403,493	\$0
2033	12	\$1,776,271	\$325,337	\$78,156	\$403,493	\$0
2034	13	\$1,450,934	\$339,652	\$63,841	\$403,493	\$0
2035	14	\$1,111,283	\$354,596	\$48,896	\$403,493	\$0
2036	15	\$756,686	\$370,199	\$33,294	\$403,493	\$0
2037	16	\$386,487	\$386,487	\$17,005	\$403,493	\$0
Total			\$2,179,481	\$1,652,853	\$3,832,334	\$0

\* Interest rate represents a blend of taxable and tax-exempt bond issuances.

**Attachment #4 - Tax Increment ProForma**  
**City of Stoughton**  
**TID No. 5 (Rail Corridor)**  
**12/17/2009**

Assumptions	
Base Value	\$18,296,934
Tax Rate	0.01856 For County, City Technical College, and School District
Property Appreciation Rate	1.50% For Existing Construction
Annual Change in Tax Rate	-0.75%
Construction Inflation Rate	3.00% For New Construction After 2011

Year	Previous Valuation	Inflation Increment	TIF Increment		Total Valuation	Cumulative Increment	TIF Tax Rate	TIF Revenue
			Construction	Land				
2010	\$18,296,934	\$0	\$0	\$0	\$18,296,934	\$0	0.018560	\$0
2011	\$18,296,934	\$274,454	\$1,515,000	\$0	\$20,086,388	\$1,789,454	0.018421	\$0
2012	\$20,086,388	\$301,296	\$30,000	\$0	\$20,417,684	\$2,120,750	0.018283	\$0
2013	\$20,417,684	\$306,265	\$3,950,208	\$0	\$24,674,157	\$6,377,223	0.018146	\$32,716
2014	\$24,674,157	\$370,112	\$67,531	\$0	\$25,111,800	\$6,814,866	0.018009	\$38,482
2015	\$25,111,800	\$376,677	\$3,390,877	\$0	\$28,879,354	\$10,582,420	0.017874	\$114,850
2016	\$28,879,354	\$433,190	\$7,331,481	\$0	\$36,644,025	\$18,347,091	0.017740	\$121,811
2017	\$36,644,025	\$549,660	\$2,533,540	\$0	\$39,727,226	\$21,430,292	0.017607	\$187,735
2018	\$39,727,226	\$595,908	\$3,094,719	\$0	\$43,417,853	\$25,120,919	0.017475	\$323,042
2019	\$43,417,853	\$651,268	\$3,220,180	\$0	\$47,289,301	\$28,992,367	0.017344	\$374,499
2020	\$47,289,301	\$709,340	\$2,096,510	\$0	\$50,095,150	\$31,798,216	0.017214	\$435,701
2021	\$50,095,150	\$751,427	\$3,381,683	\$0	\$54,228,261	\$35,931,327	0.017085	\$499,076
2022	\$54,228,261	\$813,424	\$3,518,778	\$0	\$58,560,463	\$40,263,529	0.016957	\$543,271
2023	\$58,560,463	\$878,407	\$88,112	\$0	\$59,526,982	\$41,230,048	0.016830	\$609,281
2024	\$59,526,982	\$892,905	\$68,067	\$0	\$60,487,953	\$42,191,019	0.016703	\$677,620
2025	\$60,487,953	\$907,319	\$3,751,586	\$0	\$65,146,858	\$46,849,924	0.016578	\$688,682
2026	\$65,146,858	\$977,203	\$0	\$0	\$66,124,061	\$47,827,127	0.016454	\$699,448
2027	\$66,124,061	\$991,861	\$0	\$0	\$67,115,922	\$48,818,988	0.016330	\$770,859
2028	\$67,115,922	\$1,006,739	\$6,060,662	\$0	\$74,183,322	\$55,886,388	0.016208	\$781,036
2029	\$74,183,322	\$1,112,750	\$0	\$0	\$75,296,072	\$56,999,138	0.016086	\$791,254
2030	\$75,296,072	\$1,129,441	\$14,448,890	\$0	\$90,874,403	\$72,577,469	0.015966	\$899,009
2031	\$90,874,403	\$1,363,116	\$0	\$0	\$92,237,519	\$73,940,585	0.015846	\$910,032
2032	\$92,237,519	\$1,383,563	\$0	\$0	\$93,621,082	\$75,324,148	0.015727	\$1,150,060
2033	\$93,621,082	\$1,404,316	\$0	\$0	\$95,025,398	\$76,728,464	0.015609	\$1,162,873
2034	\$95,025,398	\$1,425,381	\$0	\$0	\$96,450,779	\$78,153,845	0.015492	\$1,175,747
2035	\$96,450,779	\$1,446,762	\$0	\$0	\$97,897,541	\$79,600,607	0.015376	\$1,188,685
2036	\$97,897,541	\$1,468,463	\$0	\$0	\$99,366,004	\$81,069,070	0.015261	\$1,201,687
2037	\$99,366,004	\$1,490,490	\$0	\$0	\$100,856,494	\$82,559,560	0.015146	\$1,214,752
<b>Total</b>		<b>\$14,029,646</b>	<b>\$58,547,823</b>	<b>\$0</b>				<b>\$8,588,373</b>

**Attachment #5 - Tax Increment Cash Flow**  
**City of Stoughton**  
**TID No. 5 (Rail Corridor)**  
**12/17/2009**

Year	Beginning Balance	Revenues					Expenses		Annual Surplus (Deficit)	Balance After Surplus to Principal
		Capital Interest & Debt Reserve	TIF Revenues	Interest Income	Other	Total Revenues	Debt Service	Other Expenses		
2010	0	0	0	0	0	0	0	0	0	0
2011	0	26,977	0	0	0	26,977	26,977	0	0	0
2012	0	26,977	0	0	0	26,977	26,977	0	0	0
2013	0	26,977	32,716	0	0	59,693	26,977	0	32,716	32,716
2014	32,716	0	38,482	818	0	39,300	26,977	0	12,323	45,039
2015	45,039	104,759	114,850	1,126	0	220,735	162,638	0	58,098	103,137
2016	103,137	0	121,811	2,578	0	124,390	162,638	0	(38,248)	64,889
2017	64,889	0	187,735	1,622	0	189,358	252,118	0	(62,760)	2,129
2018	2,129	0	323,042	53	0	323,095	252,118	28,005	42,972	45,101
2019	45,101	0	374,499	1,128	0	375,626	252,118	28,005	95,503	140,604
2020	140,604	0	435,701	3,515	0	439,216	252,118	28,005	159,093	299,697
2021	299,697	200,898	499,076	7,492	0	707,467	453,016	28,005	226,446	526,142
2022	526,142	0	543,271	13,154	0	556,424	655,611	28,005	(127,191)	398,951
2023	398,951	0	609,281	9,974	0	619,254	655,611	28,005	(64,361)	334,589
2024	334,589	0	677,620	8,365	0	685,985	655,611	28,005	2,369	336,959
2025	336,959	0	688,682	8,424	0	697,106	655,611	28,005	13,491	350,449
2026	350,449	0	699,448	8,761	0	708,210	655,611	28,005	24,594	375,043
2027	375,043	0	770,859	9,376	0	780,235	655,611	28,005	96,619	471,662
2028	471,662	0	781,036	11,792	0	792,828	655,611	80,000	57,217	528,879
2029	528,879	0	791,254	13,222	0	804,476	655,611	80,000	68,865	597,744
2030	597,744	0	899,009	14,944	0	913,952	655,611	80,000	178,341	776,086
2031	776,086	0	910,032	31,043	0	941,075	597,732	80,000	263,343	1,039,429
2032	1,039,429	0	1,150,060	41,577	0	1,191,637	597,732	80,000	513,905	1,553,334
2033	1,553,334	0	1,162,873	62,133	0	1,225,006	597,732	0	627,274	2,180,608
2034	2,180,608	0	1,175,747	87,224	0	1,262,972	597,732	0	665,240	2,845,847
2035	2,845,847	0	1,188,685	113,834	0	1,302,519	403,493	0	899,026	3,744,873
2036	3,744,873	0	1,201,687	149,795	0	1,351,482	403,493	0	947,989	4,692,862
2037	4,692,862	0	1,214,752	187,714	0	1,402,467	403,493	0	998,974	5,691,836
<b>Total</b>		<b>386,587</b>	<b>8,588,373</b>	<b>116,343</b>	<b>0</b>	<b>9,091,304</b>	<b>7,795,168</b>	<b>520,050</b>		

Other Expenses includes Organizational Costs, Administrative Costs, and Discretionary Funds

2.50% = Assumed Investment Rate For Interest Income

**Attachment #6 - Analysis of Impact on Overlying Jurisdictions  
Over Maximum Life of TID  
City of Stoughton  
TID No. 5 (Rail Corridor)  
12/17/2009**

<b>Taxing Jurisdiction</b>	<b>% of Mill Rate by Jurisdiction</b>	<b>Annual Taxes Collected on Base Value Distributed to Taxing Jurisdictions</b>	<b>Total Taxes Captured by TID Not Distributed to Jurisdictions*</b>	<b>Annual Taxes Collected After TID</b>	<b>Increase in Annual Tax Collections After TID</b>
School District	42.6%	\$144,830	\$3,783,335	\$656,304	\$511,474
Tech. College	6.4%	\$21,654	\$565,656	\$98,126	\$76,472
County	12.5%	\$42,313	\$1,105,320	\$191,742	\$149,430
Local	35.3%	\$119,975	\$3,134,062	\$543,673	\$423,697
Other*	3.2%	\$10,819	\$0	\$49,027	\$38,208
<b>Total</b>	<b>100.0%</b>	<b>\$339,591</b>	<b>\$8,588,373</b>	<b>\$1,538,871</b>	<b>\$1,199,280</b>

\* "Other" includes primarily State taxes, which do not go to TID.

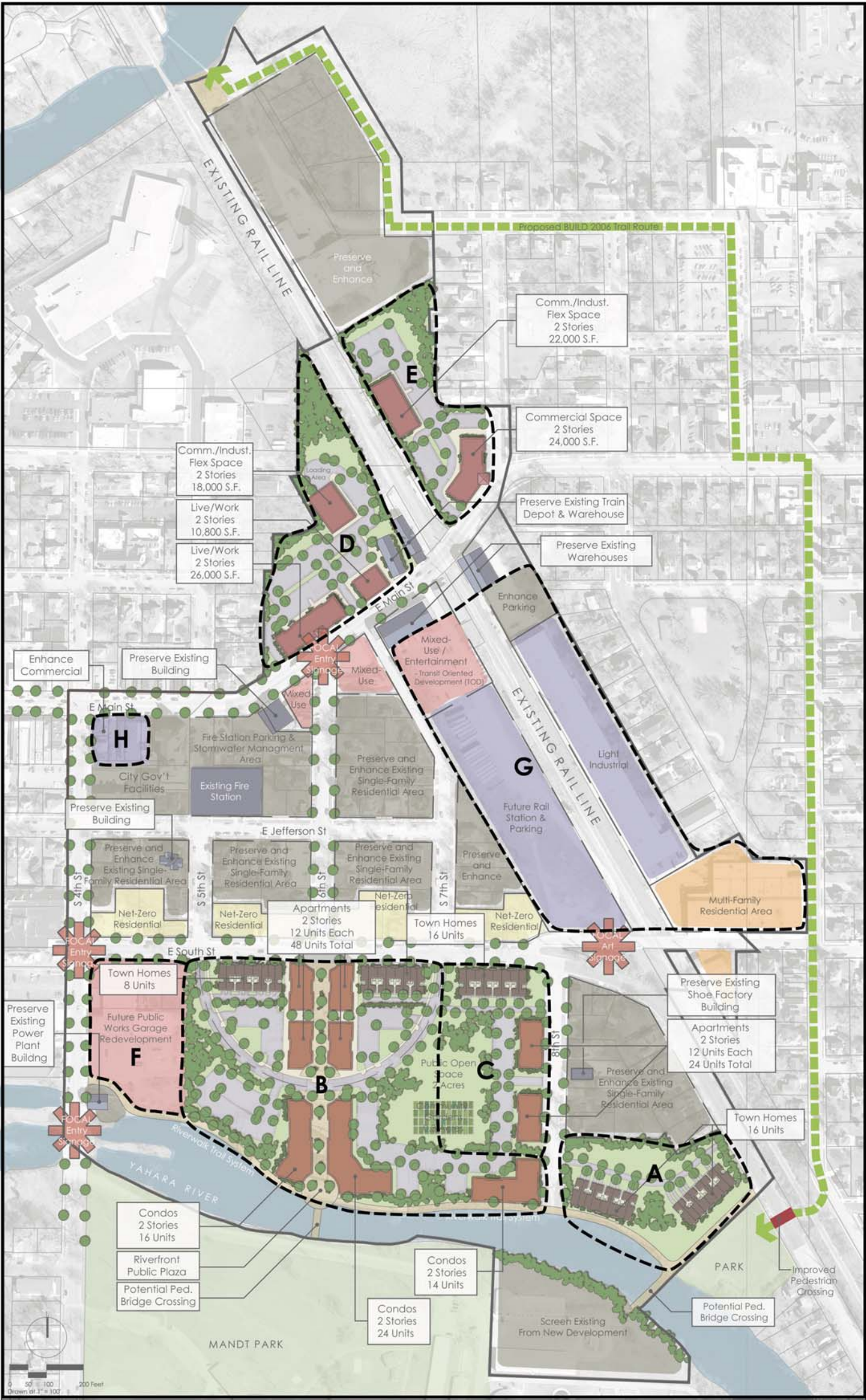
**Attachment #7: Increment Projections**  
**City of Stoughton**  
**TID No. 5 (Rail Corridor)**  
**12/17/2009**

Year	Yearly Total	Area A	Area B	Area C	Area D	Area E	Area F	Area G	Area H	Misc. Housing Rehab*
2010	\$0									
2011	\$1,515,000	\$1,500,000								\$15,000
2012	\$30,000									\$30,000
2013	\$3,615,000		\$2,200,000		\$1,354,500					\$60,000
2014	\$60,000									\$60,000
2015	\$2,925,000					\$2,865,200				\$60,000
2016	\$6,140,000		\$2,919,794		\$3,160,500					\$60,000
2017	\$2,060,000							\$2,000,000		\$60,000
2018	\$2,443,000					\$2,383,467				\$60,000
2019	\$2,468,000		\$2,407,754							\$60,000
2020	\$1,560,000								\$1,500,000	\$60,000
2021	\$2,443,000				\$2,383,467					\$60,000
2022	\$2,468,000		\$2,407,754							\$60,000
2023	\$60,000									\$60,000
2024	\$45,000									\$45,000
2025	\$2,408,000		\$2,407,754							
2026	\$0									
2027	\$0									
2028	\$3,560,000			\$3,560,400						
2029	\$0									
2030	\$8,000,000						\$8,000,000			
2031	\$0									
2032	\$0									
2033	\$0									
2034	\$0									
2035	\$0									
2036	\$0									
2037	\$0									
	<b>\$41,800,000</b>	\$1,500,000	\$12,343,055	\$3,560,400	\$6,898,467	\$5,248,667	\$8,000,000	\$2,000,000	\$1,500,000	\$750,000

\* Assume 50 participants with average increase in value of \$15,000 per home.

Note: See map in this appendix for area boundaries; amounts in this table are in 2010 dollars and are adjusted for inflation in the Tax Increment ProForma (attachment #4)





STOUGHTON BUILD 2008 • REDEVELOPMENT AREA NO. 1  
city of stoughton, wisconsin • vierbicher associates



# C

## Resolutions, Notices, Minutes

### Appendix C: Resolutions, Notices, Minutes, and Other Attachments

- Attachment # 1: Timetable
- Attachment # 2: Opinion Letter from City Attorney Regarding Compliance With Statutes
- Attachment # 3: Notice to Overlying Taxing Jurisdictions of Creation of Joint Review Board (JRB)
- Attachment #4: Designation of Boundary of TID No. 6
- Attachment #5: Blight Notification Letter
- Attachment #6: City Council Resolution Declaring Blighted Area
- Attachment #7: JRB Meeting Notice – First Meeting on TID #5
- Attachment #8: JRB Meeting Minutes – First Meeting on TID #5
- Attachment #9: Public Hearing Notice to Overlying Taxing Jurisdictions
- Attachment #10: Public Hearing Notice Proof of Publication
- Attachment #11: Public Hearing Notice to Property Owners
- Attachment #12: Minutes of Public Hearing on TIF Project Plan and Community Development Authority (RDA) Approval of TIF Project Plan
- Attachment #13: RDA Certification of Redevelopment District & Cover Page of Recorded Plan
- Attachment #14: City Council Resolution Creating TID #5 and Approving Project Plan
- Attachment #15: JRB Final Meeting Notice on TID #5
- Attachment #16: JRB Resolution Approving TID #5
- Attachment #17: JRB Final Meeting Minutes on TID #5



**CITY OF STOUGHTON**  
**CREATION OF TAX INCREMENT DISTRICT NO.5**

Summary of Activities and Timetable  
Updated: December 10, 2009

Activity	Party Responsible	Date
1. <b>City Council Meeting:</b> Authorization to Proceed with Planning for TID #5	City Council	7/28/09
2. <b>RDA Meeting:</b> Discuss TID #5 Boundary & Projects	RDA	8/5/09
3. Notify Taxing Entities of City TIF Proposal & Confirm Representatives on Joint Review Board	Vierbicher / City Staff	8/6/09 – 8/14/09
4. Prepare Draft Project Plan, Update Property Inventory, Review Blight Determination Documentation, Draft TID Boundary Maps	Vierbicher	8/6/09 – 9/3/09
5. <b>RDA Meeting:</b> <ul style="list-style-type: none"> <li>Review Proposed Boundary</li> <li>Review Finding of Blight &amp; Make Recommendation to Council</li> </ul>	RDA / Vierbicher	9/9/09
6. <b>City Council Meeting:</b> Adopt Finding of Blight	City Council	9/22/09
7. <b>RDA Meeting:</b> Establish Date for Public Hearing	RDA / Vierbicher	12/10/09
8. <b>RDA Meeting:</b> <ul style="list-style-type: none"> <li>Amend Redevelopment District Boundary, if Needed</li> <li>Review Draft TID Redevelopment Project Plan</li> <li>If Few Changes Needed, Establish Date for Public Hearing</li> </ul>	RDA / Vierbicher	12/23/09
9. Public Hearing Notice to Newspaper	Vierbicher	12/28/09
10. Send Notice for TIF Public Hearing to Taxing Entities	Vierbicher	12/28/09
11. Notify Property Owners of Public Hearing by Certified Mail	City Staff	12/28/09
12. Publish Notice for TID Boundary and Redevelopment Project Plan Public Hearing (Class II)	Newspaper	1/7/10 & 1/14/10
13. <b>Plan Commission Meeting:</b> Informational and Review Meeting	Plan Cmsn / Vierbicher	1/11/10
14. <b>RDA Meeting:</b> <ul style="list-style-type: none"> <li>Public Hearing – TID Boundary &amp; Redevelopment Project Plan (<i>at least 10 days after last insertion of public notice; at least 20 days after notifying property owners</i>)</li> <li>Consider amendment of RA #1 Boundary</li> <li>Consider Adoption of TID Boundary &amp; Redevelopment Project Plan; Submit to City Council for Consideration</li> </ul>	RDA / Vierbicher	1/27/10
15. Provide Materials to City Attorney for Attorney Opinion Letter	Vierbicher	1/28/10
16. <b>City Council Meeting:</b> Consider Approval of TID Boundary, Redevelopment Project Plan, and Resolutions ( <i>Not less than 14 days after public hearing</i> )	City Council	2/23/10
17. <b>RDA Meeting:</b> <ul style="list-style-type: none"> <li>Discuss Project Implementation</li> <li>Certify Redevelopment Plan to City Council</li> </ul>	RDA / Vierbicher	2/24/10
18. <b>Joint Review Board Meeting:</b> Consider Approval of TID #5 Project Plan ( <i>Within 30 days of Council approval</i> ); Notification to City of JRB Approval ( <i>within 7 days</i> )	Joint Review Board	2/24/10 – 3/26/10
19. Notify Dept. of Revenue of TID #5 Creation	City Staff	2/24/10 – 3/26/10
20. Submit TID Base Year Package to Wisconsin Department of Revenue (with \$1,000 certification fee)	City Clerk / Assessor	Nov. 2010
21. Wisconsin Department of Revenue TID Certifications	WI Dept. of Revenue	March 2011

- The City of Stoughton RDA meets the second Wednesday of each month at 6:00 p.m. in City Hall.
- The Stoughton City Council meets the second and fourth Tuesdays of the month at 7:00 p.m. at Stoughton City Hall.